

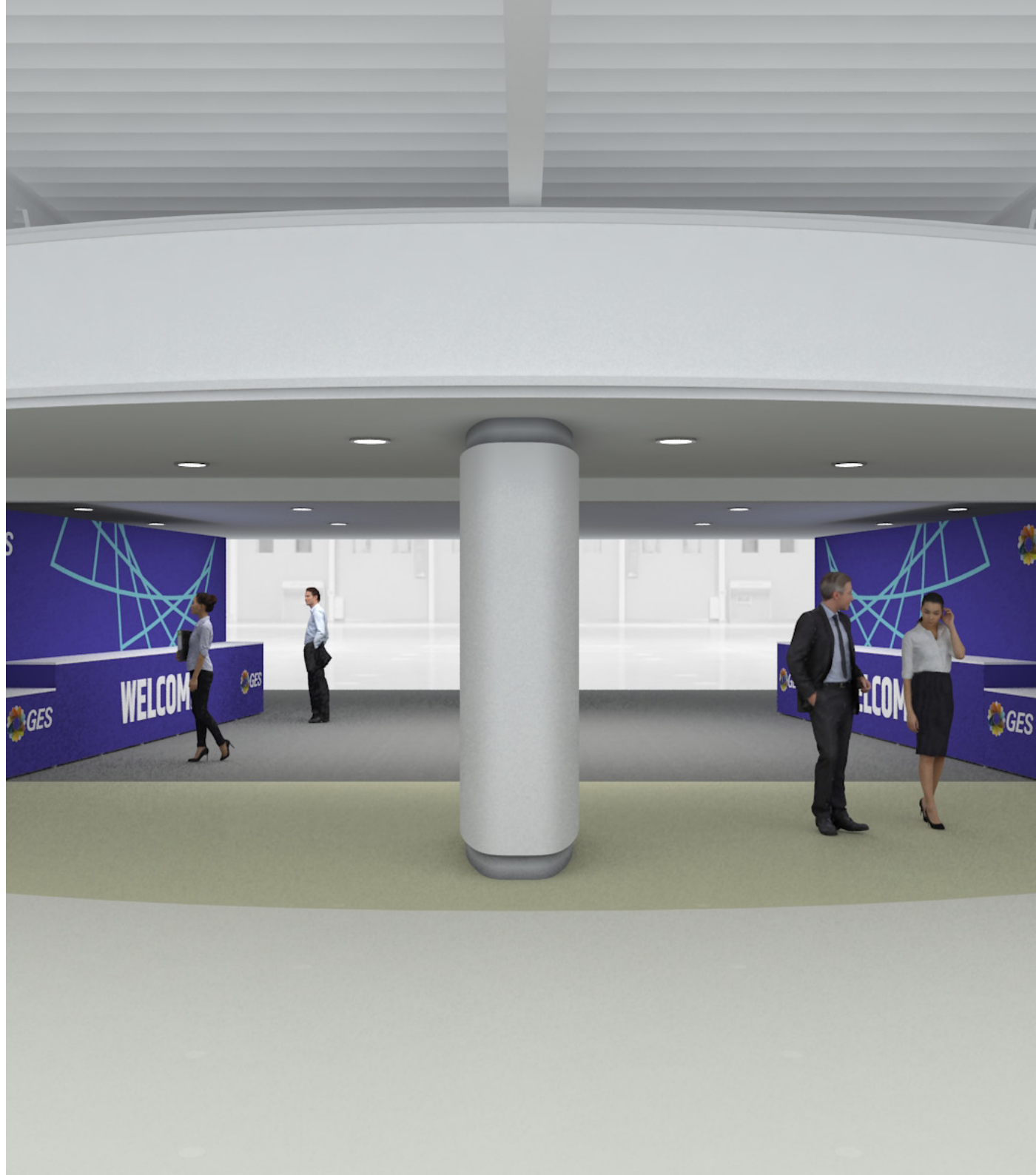


# FEATURE OPTIONS



# Contents

<b>1. Entrance Options</b>	<b>3</b>
<b>2. Registration Area Options</b>	<b>30</b>
<b>3. Info Point Options</b>	<b>39</b>
<b>4. Theatre Options</b>	<b>46</b>
<b>5. Workshop Options</b>	<b>59</b>
<b>6. Exhibitor Pod Options</b>	<b>66</b>
<b>7. Sales Lounge Options</b>	<b>73</b>
<b>8. Meeting Room Options</b>	<b>80</b>
<b>9. Lounge and Bar Options</b>	<b>87</b>
<b>10. Extra's</b>	<b>100</b>
<b>11. Realised Projects</b>	<b>106</b>



# ENTRANCE OPTIONS

## NEC - BIRMINGHAM

NEC - Show Ready - Silver	4
NEC - Show Ready - Silver Plus	5
NEC - Show Ready - Gold	6
NEC - Show Ready - Gold Plus	7
NEC - Show Ready - Platinum	8
NEC - Show Ready - Platinum Plus	9
NEC - Show Ready - Hall Variations	10

NEC - AMP - Silver	11
NEC - AMP - Silver Plus	12
NEC - AMP - Gold	13
NEC - AMP - Gold Plus	14
NEC - AMP - Platinum	15
NEC - AMP - Platinum Plus	16
NEC - AMP - Hall Variations	17

## ExCeL - LONDON

ExCeL - Show Ready - Silver	18
ExCeL - Show Ready - Silver Plus	19
ExCeL - Show Ready - Gold	20
ExCeL - Show Ready - Gold Plus	21
ExCeL - Show Ready - Platinum	22
ExCeL - Show Ready - Platinum Plus	23

ExCeL - AMP - Silver	24
ExCeL - AMP - Silver Plus	25
ExCeL - AMP - Gold	26
ExCeL - AMP - Gold Plus	27
ExCeL - AMP - Platinum	28
ExCeL - AMP - Platinum Plus	29

# 1. Entrance Options

## NEC - Show Ready - Silver

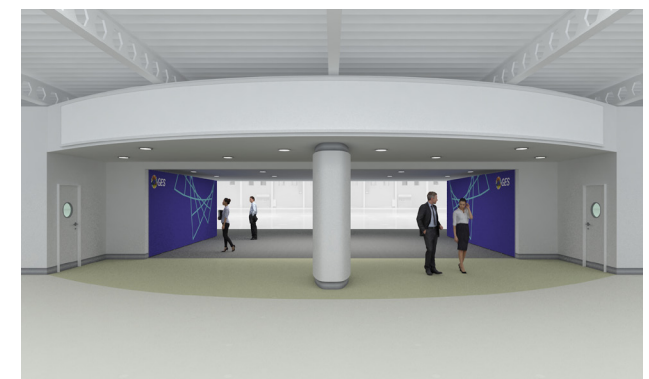
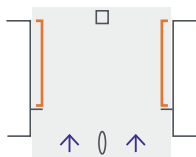


### 1. SHOW READY WALL x2

width	7000mm
depth	500mm
height	2500mm



### KEY PLAN



# 1. Entrance Options

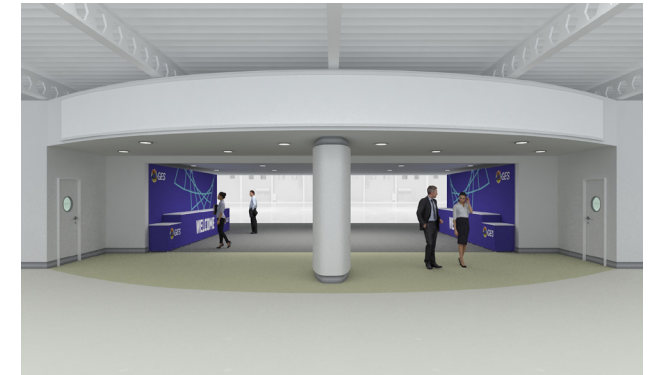
## NEC - Show Ready - Silver Plus

### 1. SHOW READY WALL x2

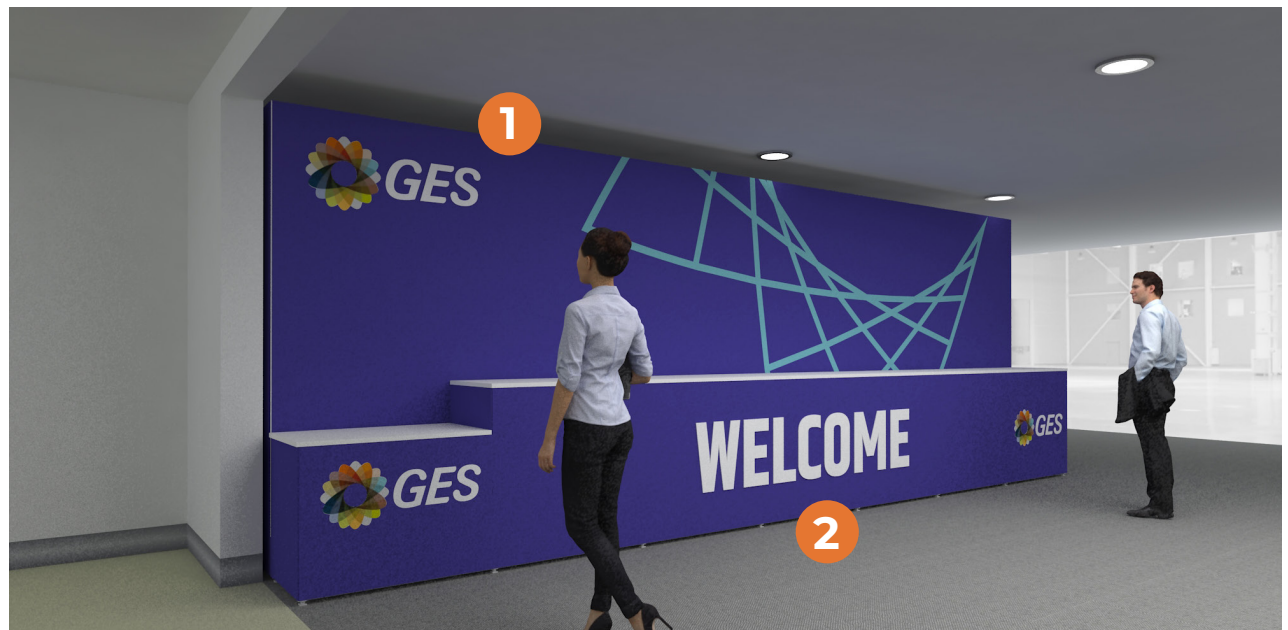
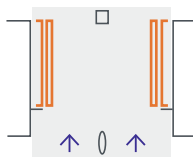
width	7000mm
depth	500mm
height	2500mm

### 2. ACCESSIBLE SHELL SCHEME COUNTER WITH OVERLAY GRAPHICS x2 \*

width	7000mm
depth	500mm
height	1000mm



### KEY PLAN



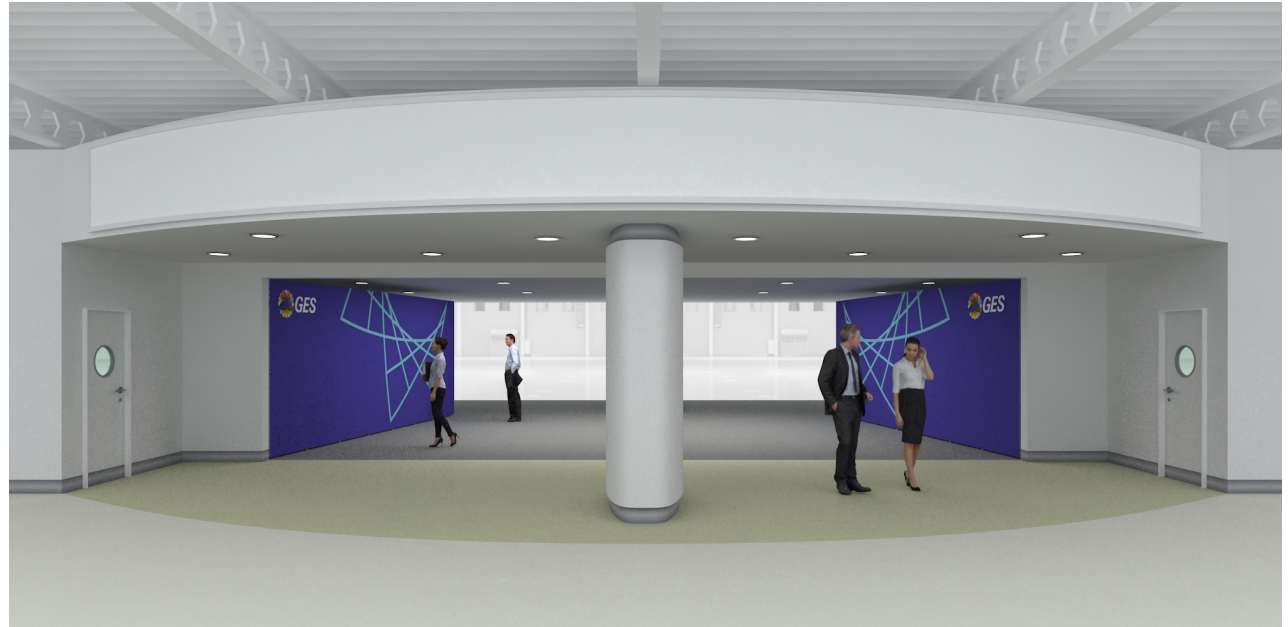
\* Position of counter to be agreed with Account manager and Features team

# 1. Entrance Options

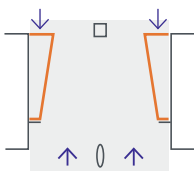
## NEC - Show Ready - Gold

### 1. SHOW READY STORAGE WITH TRAPEZOID SHAPE (REAR DOOR) x2 \*

width	7000mm
depth	2000mm
height	2500mm



#### KEY PLAN



\* Door graphics to be block color only (no logos or text to be printed in this area)

# 1. Entrance Options

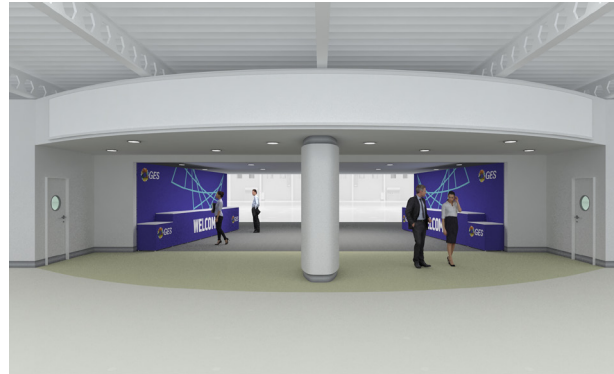
## NEC - Show Ready - Gold Plus

### 1. SHOW READY STORAGE WITH TRAPEZOID SHAPE (REAR DOOR) x2 \*

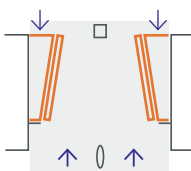
width	7000mm
depth	2000mm
height	2500mm

### 2. ACCESSIBLE SHELL SCHEME COUNTER WITH OVERLAY GRAPHICS x2 \*\*

width	7000mm
depth	500mm
height	1000mm



#### KEY PLAN



\* Door graphics to be block color only (no logos or text to be printed in this area)

\*\* Position of counter to be agreed with Account manager and Features team



# 1. Entrance Options

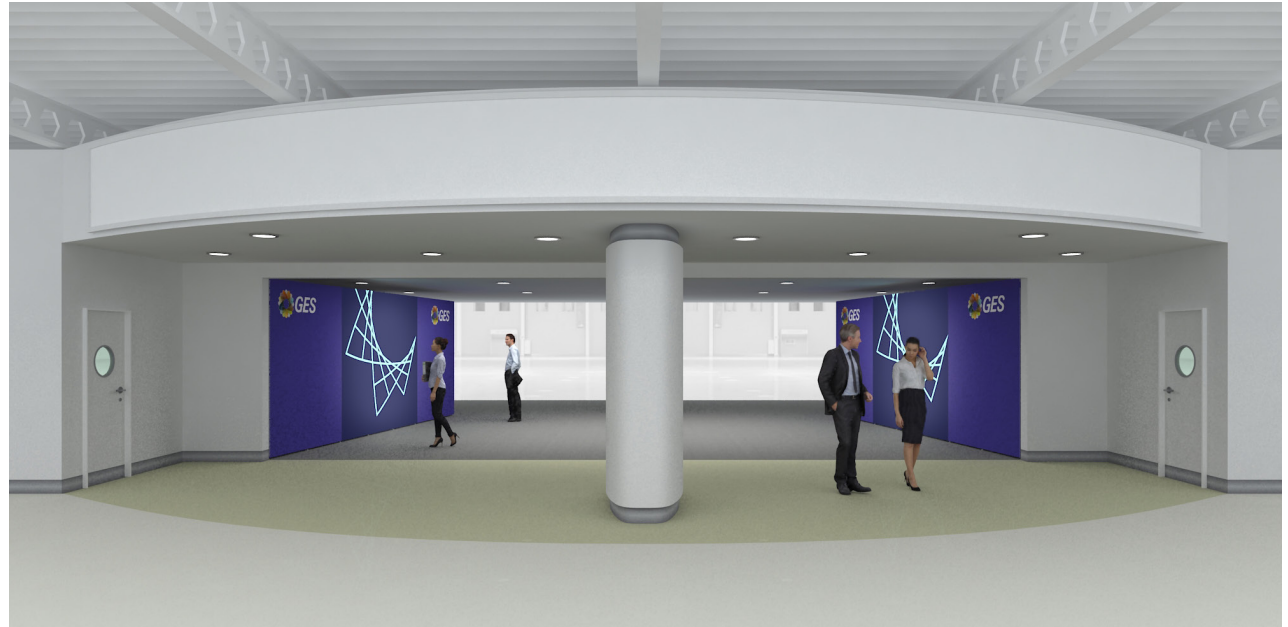
## NEC - Show Ready - Platinum

### 1. SHOW READY STORAGE WITH TRAPEZOID SHAPE (REAR DOOR) x2 \*

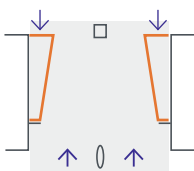
width	7000mm
depth	2000mm
height	2500mm

### 2. CENTRAL LIGHTBOX ON SHOW READY WALL x2

width	3000mm
height	2500mm



#### KEY PLAN



\* Door graphics to be block color only (no logos or text to be printed in this area)

# 1. Entrance Options

## NEC - Show Ready - Platinum Plus

### 1. SHOW READY STORAGE WITH TRAPEZOID SHAPE (REAR DOOR) x2 \*

width	7000mm
depth	2000mm
height	2500mm

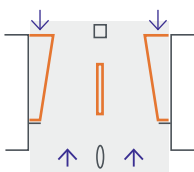
### 2. CENTRAL LIGHTBOX ON SHOW READY WALL x2

width	3000mm
height	2500mm

### 3. ACCESSIBLE CENTRAL SHELL SCHEME COUNTER WITH OVERLAY

width	4000mm
depth	500mm
height	1000mm

#### KEY PLAN



\* Door graphics to be block color only (no logos or text to be printed in this area)



# 1. Entrance Options

## NEC - Show Ready - Hall Variations

### 1. OPTION 1: SHOW READY WALLS x2 \*

width	1000mm + 4500mm
depth	500mm
height	2500mm

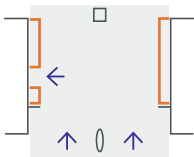
### 2. OPTION 2: SHOW READY STORAGE WALLS x2 \*

width	1000mm + 4500mm
depth	1000mm
height	2500mm

### 3. OPTION 3: SHOW READY STORAGE WITH ACCESSIBLE SHELL SCHEME COUNTER AND OVERLAY GRAPHICS x2 \*/\*\*

width	1000mm + 4500mm
depth	1500mm
height	2500mm

#### KEY PLAN



\* not applicable to Entrance Hall 2

\*\* Position of counter to be agreed with Account manager and Features team

# 1. Entrance Options

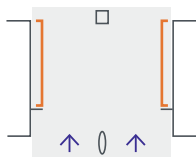
## NEC - AMP - Silver

### 1. AMP WALL x2 \*

width	7000mm
depth	500mm
height	2500mm



### KEY PLAN



\* Finishing and capping at Page 101



# 1. Entrance Options

## NEC - Show Ready - Silver Plus

### 1. AMP WALL x2 \*

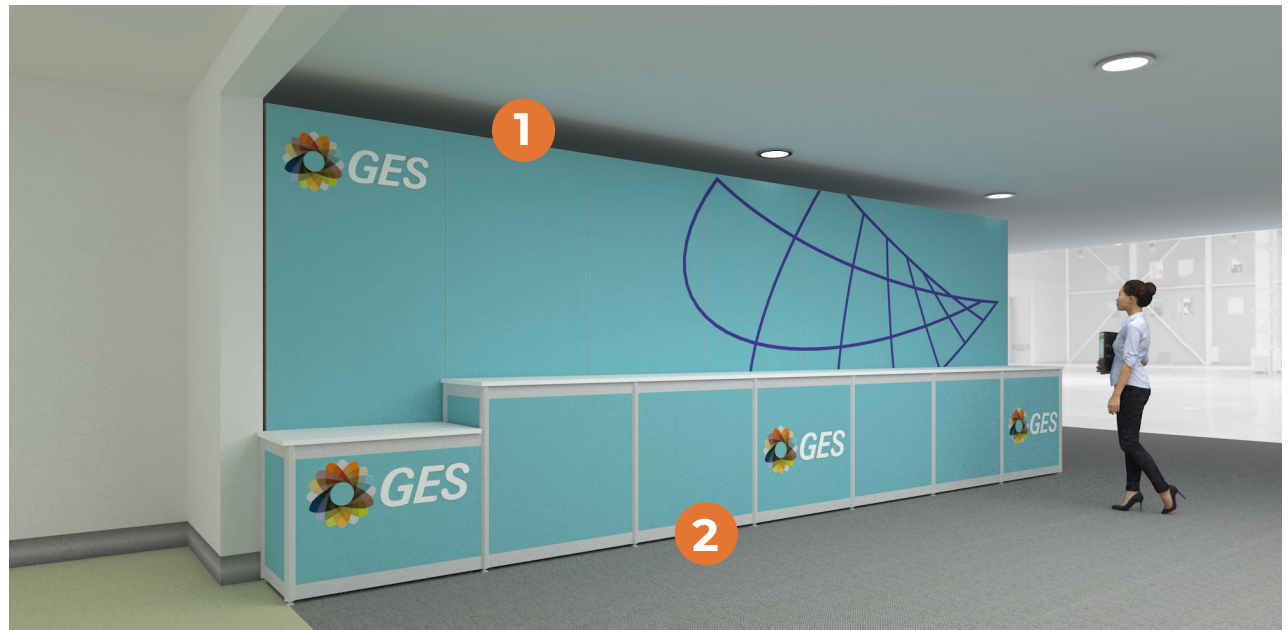
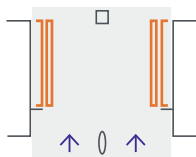
width	7000mm
depth	500mm
height	2500mm

### 2. ACCESSIBLE SHELL SCHEME COUNTER WITH INLAY GRAPHICS x2 \*\*

width	7000mm
depth	500mm
height	1000mm



### KEY PLAN



\* Finishing and capping at Page 101

\*\* Position of counter to be agreed with Account manager and Features team



# 1. Entrance Options

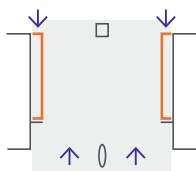
## NEC - AMP - Gold

### 1. AMP STORAGE (REAR DOOR) \*

width	7000mm
depth	1000mm
height	2500mm



#### KEY PLAN



\* Finishing and capping at Page 101

# 1. Entrance Options

## NEC - AMP - Gold Plus



### 1. AMP STORAGE (REAR DOOR) \*

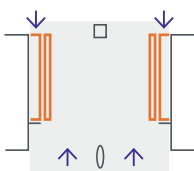
width	7000mm
depth	1000mm
height	2500mm

### 2. ACCESSIBLE SHELL SCHEME COUNTER WITH INLAY GRAPHICS x2 \*

width	7000mm
depth	500mm
height	1000mm



#### KEY PLAN



\* Door graphics to be block color only (no logos or text to be printed in this area)

\*\* Position of counter to be agreed with Account manager and Features team



# 1. Entrance Options

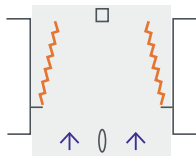
## NEC - AMP - Platinum

### 1. AMP WALL WITH ZIG-ZAG SHAPE x2 \*

width	7000mm
depth	2000mm
height	2500mm



#### KEY PLAN



\* Finishing and capping at Page 101

# 1. Entrance Options

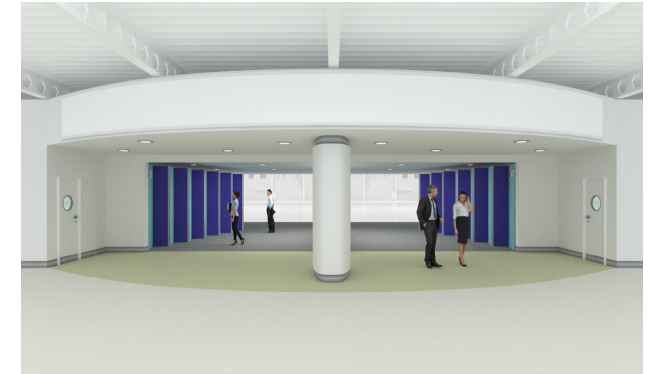
## NEC - AMP - Platinum Plus

### 1. AMP WALL WITH ZIG-ZAG SHAPE x2 \*

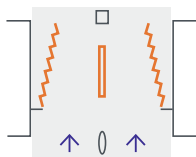
width	7000mm
depth	2000mm
height	2500mm

### 2. ACCESSIBLE CENTRAL SHELL SCHEME COUNTER WITH OVERLAY GRAPHICS

width	4000mm
depth	500mm
height	1000mm



### KEY PLAN



\* Finishing and capping at Page 101

# 1. Entrance Options

## NEC - AMP - Hall Variations

### 1. OPTION 1: AMP WALLS x2 \*

width	1000mm + 4500mm
depth	500mm
height	2500mm

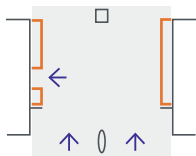
### 2. OPTION 2: AMP STORAGE WALLS x2 \*

width	1000mm + 4500mm
depth	1000mm
height	2500mm

### 3. OPTION 3: AMP STORAGE WITH ACCESSIBLE SHELL SCHEME COUNTER AND INLAY GRAPHICS x2 \*/\*\*

width	1000mm + 4500mm
depth	1500mm
height	2500mm

#### KEY PLAN



\* not applicable to Entrance Hall 2

\*\* Position of counter to be agreed with Account manager and Features team

# 1. Entrance Options

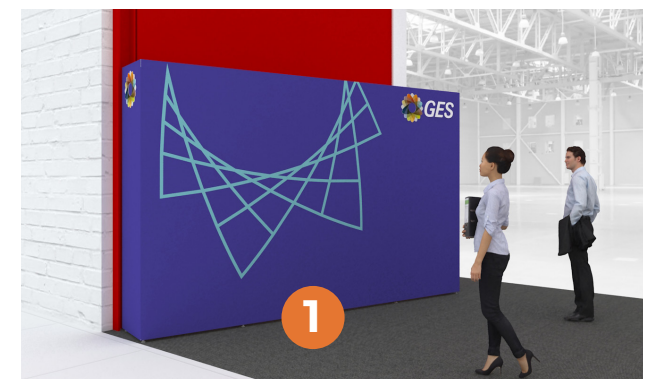
## ExCeL - Show Ready - Silver

### 1. SHOW READY WALL x2 \*

width	4000mm
depth	500mm
height	2500mm



### KEY PLAN



\* Panels to be built on a angle to allow access for inspections

# 1. Entrance Options

## ExCeL - Show Ready - Silver Plus

### 1. SHOW READY STORAGE (FRONT DOOR) x2

width	4000mm
depth	1000mm
height	2500mm



### KEY PLAN



\* Door graphics to be block color only (no logos or text to be printed in this area)



# 1. Entrance Options

## ExCeL - Show Ready - Gold

### 1. SHOW READY STORAGE (FRONT DOOR) x2

width	4000mm
depth	1000mm
height	2500mm

### 2. ACCESSIBLE SHELL SCHEME COUNTER WITH OVERLAY GRAPHICS x2 \*\*

width	4000mm
depth	500mm
height	1000mm



### KEY PLAN



\* Door graphics to be block color only (no logos or text to be printed in this area)

\*\* Position of counter to be agreed with Account manager and Features team



# 1. Entrance Options

## ExCeL - Show Ready - Gold Plus

### 1. SHOW READY STORAGE (FRONT DOOR) x2 \*

width	4000mm
depth	1000mm
height	2500mm

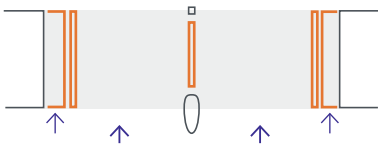
### 2. ACCESSIBLE SHELL SCHEME COUNTER WITH OVERLAY GRAPHICS x2 \*\*

width	4000mm
depth	500mm
height	1000mm

### 2. CENTRAL SHELL SCHEME COUNTER WITH OVERLAY GRAPHICS x2

width	3000mm
depth	500mm
height	1000mm

#### KEY PLAN



\* Door graphics to be block color only (no logos or text to be printed in this area)

\*\* Position of counter to be agreed with Account manager and Features team



# 1. Entrance Options

## ExCeL - Show Ready - Platinum

### 1. SHOW READY STORAGE (FRONT DOOR) x2\*

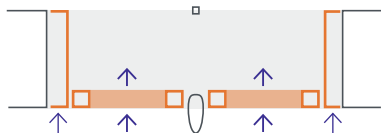
width	4000mm
depth	1000mm
height	2500mm

### 2. SHOW READY ARCHWAY STRUCTURE x2 \*\*

width	6000mm
depth	1000mm
height	3000mm



### KEY PLAN



\* Door graphics to be block color only (no logos or text to be printed in this area)

\*\*Internal passageway: width of 4000mm and height of 2500mm



# 1. Entrance Options

## ExCeL - Show Ready - Platinum Plus

### 1. SHOW READY STORAGE (FRONT DOOR) x2\*

width	4000mm
depth	1000mm
height	2500mm

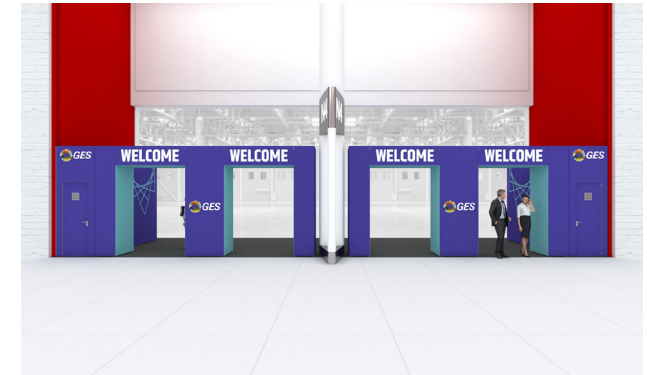
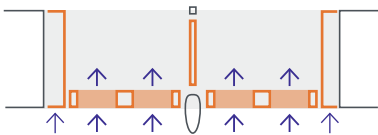
### 2. SHOW READY DOUBLE ARCHWAY STRUCTURE x2 \*\*

width	6000mm
depth	1000mm
height	3000mm

### 3. ACCESSIBLE CENTRAL SHELL SCHEME COUNTER WITH OVERLAY GRAPHICS

width	3000mm
depth	500mm
height	1000mm

#### KEY PLAN



\* Door graphics to be block color only (no logos or text to be printed in this area)

\*\*2 Internal passageways: width of 2000mm and height of 2500mm (each)



# 1. Entrance Options

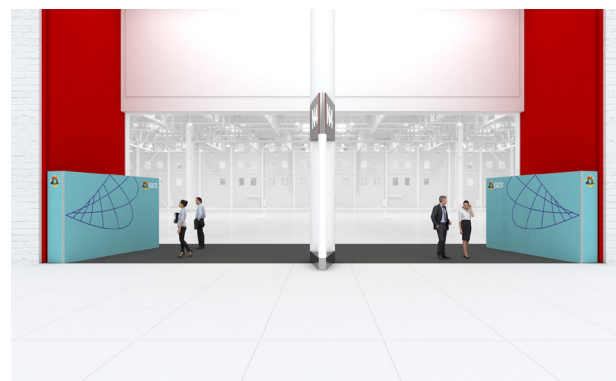
## ExCeL - AMP - Silver

### 1. AMP WALL x2 \*/\*\*

width	4000mm
depth	500mm
height	2500mm



### KEY PLAN



\* Panels to be built on a angle to allow access for inspections

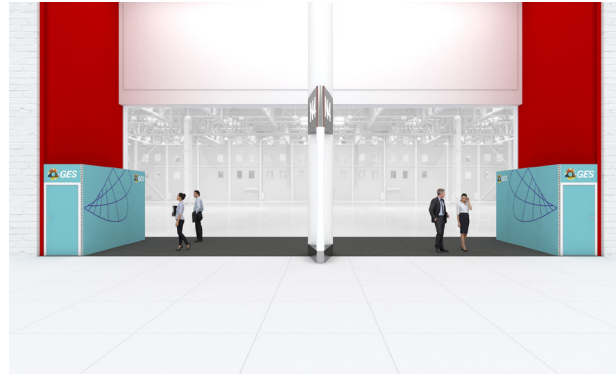
\*\* Finishing and capping at Page 101

# 1. Entrance Options

## ExCeL - Show Ready - Silver Plus

### 1. AMP STORAGE (REAR DOOR) \*

width	4000mm
depth	1000mm
height	2500mm



### KEY PLAN



\* Finishing and capping at Page 101



# 1. Entrance Options

## ExCeL - AMP - Gold

### 1. AMP STORAGE (REAR DOOR) \*

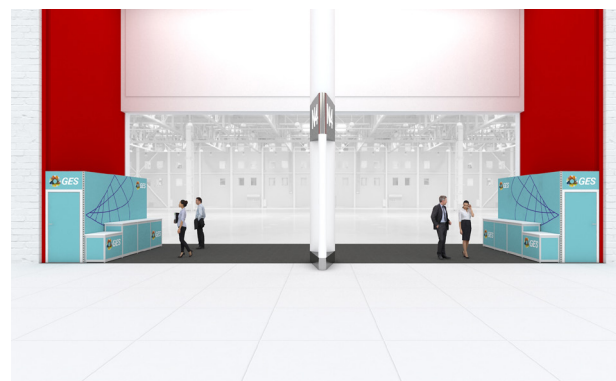
width	4000mm
depth	1000mm
height	2500mm

### 2. ACCESSIBLE SHELL SCHEME COUNTER WITH INLAY GRAPHICS x2 \*\*

width	4000mm
depth	500mm
height	1000mm



### KEY PLAN



\* Finishing and capping at Page 101

\*\* Position of counter to be agreed with Account manager and Features team



# 1. Entrance Options

## ExCeL - AMP - Gold Plus

### 1. AMP STORAGE (REAR DOOR) \*

width	4000mm
depth	1000mm
height	2500mm

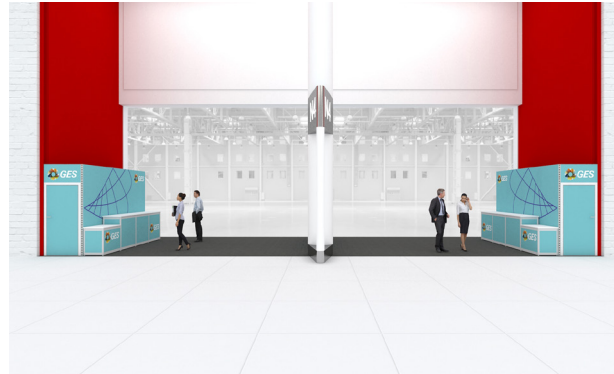
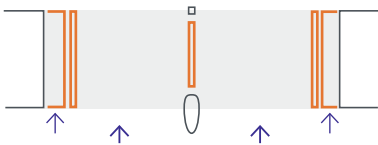
### 2. ACCESSIBLE SHELL SCHEME COUNTER WITH INLAY GRAPHICS x2 \*\*

width	4000mm
depth	500mm
height	1000mm

### 3. CENTRAL SCHEME COUNTER WITH INLAY GRAPHICS

width	3000mm
depth	500mm
height	1000mm

#### KEY PLAN



\* Door graphics to be block color only (no logos or text to be printed in this area)

\*\* Position of counter to be agreed with Account manager and Features team

# 1. Entrance Options

## ExCeL - AMP - Platinum

### 1. AMP STORAGE (REAR DOOR) \*

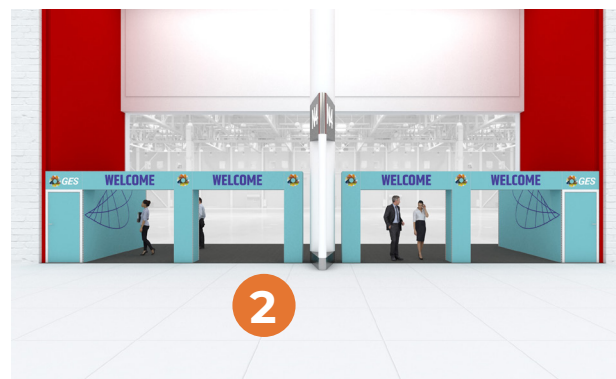
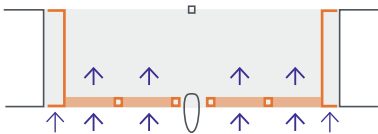
width	4000mm
depth	1000mm
height	2500mm

### 2. SHOW READY ARCHWAY STRUCTURE x2 \*/\*\*

width	6000mm
depth	500mm
height	1000mm



### KEY PLAN



\* Finishing and capping at Page 101

\*\*2 Internal passageways: width of 2500mm and height of 2000mm (each)



# 1. Entrance Options

## ExCeL - AMP - Platinum Plus



### 1. AMP STORAGE (REAR DOOR) \*

width	4000mm
depth	1000mm
height	2500mm

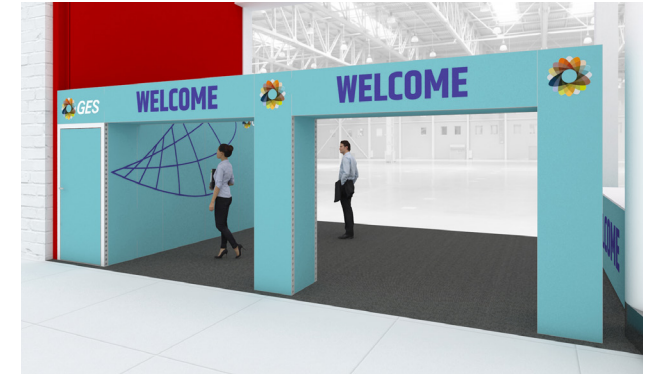
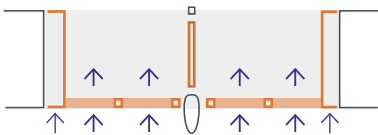
### 2. SHOW READY ARCHWAY STRUCTURE x2 \*/\*\*

width	6000mm
depth	500mm
height	1000mm

### 3. ACCESSIBLE CENTRAL SCHEME COUNTER WITH OVERLAY GRAPHICS

width	3000mm
depth	500mm
height	1000mm

#### KEY PLAN



\* Finishing and capping at Page 101

\*\*2 Internal passageways: width of 2500mm and height of 2000mm (each)



# REGISTRATION AREA

## OPTIONS

Show Ready - Silver - Reg	31	AMP - Silver - Reg	35
Show Ready - Silver - Self Reg	32	AMP - Silver - Self Reg	36
Show Ready - Gold	33	AMP - Gold	37
Show Ready - Platinum	34	AMP - Platinum	38

## 2. Registration Area Options

### Show Ready - Silver - Reg

#### 1. SHOW READY WALL

height	2500mm
--------	--------

#### 2. SHOW READY LOW WALL

width	500mm
depth	1000mm
height	1000mm

#### 3. REGISTRATION BANKING UNIT

width	1000mm
depth	700mm
height	1000mm

#### 4. ACCESSIBLE SHOW READY COUNTER



## 2. Registration Area Options

### Show Ready - Silver - Self Reg

#### 1. SHOW READY WALL

height	2500mm
--------	--------

#### 2. SHOW READY LOW WALL

width	500mm
depth	1000mm
height	1250mm

#### 3. REGISTRATION COUNTER UNIT

width	1000mm
depth	600mm
height	1000mm

#### 4. ACCESSIBLE SHOW READY COUNTER



## 2. Registration Area Options

### Show Ready - Gold

#### 1. SHOW READY STORAGE

height	2500mm
--------	--------

#### 2. SHOW READY LOW WALL

width	500mm
depth	1000mm
height	1250mm

#### 3. REGISTRATION BANKING UNIT

width	1000mm
depth	700mm
height	1000mm

#### 4. REGISTRATION COUNTER UNIT

width	1000mm
depth	600mm
height	1000mm

#### 5. ACCESSIBLE SHOW READY COUNTER



# 2. Registration Area Options

## Show Ready - Platinum

### 1. SHOW READY STORAGE

height	2500mm
--------	--------

### 2. SHOW READY LOW WALL

height	1250mm
--------	--------

### 3. SHOW READY ARCHWAY STRUCTURE \*

height	3000mm
--------	--------

### 4. REGISTRATION BANKING UNIT

width	1000mm
depth	700mm
height	1000mm

### 5. REGISTRATION COUNTER UNIT

width	1000mm
depth	600mm
height	1000mm

### 6. ACCESSIBLE SHOW READY COUNTER



\* Internal passageway of 3000mm and internal height of 2500mm



## 2. Registration Area Options

### AMP - Silver - Reg

#### 1. AMP WALL \*

height	2500mm
--------	--------

#### 2. AMP LOW WALL \*

width	500mm
depth	1000mm
height	1000mm

#### 3. REGISTRATION BANKING UNIT

width	1000mm
depth	700mm
height	1000mm

#### 4. ACCESSIBLE SHOW READY COUNTER



\* Finishing and capping at Page 101

## 2. Registration Area Options

### AMP - Silver - Self Reg

#### 1. AMP WALL \*

height	2500mm
--------	--------

#### 2. AMP LOW WALL \*

width	1000mm
height	1000mm

#### 3. REGISTRATION COUNTER UNIT

width	1000mm
depth	600mm
height	1000mm

#### 4. ACCESSIBLE SHOW READY COUNTER



\* Finishing and capping at Page 101

## 2. Registration Area Options

### AMP - Gold

#### 1. AMP STORAGE \*

height	2500mm
--------	--------

#### 2. AMP LOW WALL \*

height	1000mm
--------	--------

#### 3. REGISTRATION BANKING UNIT

width	1000mm
depth	700mm
height	1000mm

#### 4. REGISTRATION COUNTER UNIT

width	1000mm
depth	600mm
height	1000mm

#### 5. ACCESSIBLE SHOW READY COUNTER



\* Finishing and capping at Page 101

# 2. Registration Area Options

## AMP - Platinum

### 1. AMP STORAGE \*

height	2500mm
--------	--------

### 2. AMP LOW WALL \*

height	1000mm
--------	--------

### 3. AMP ARCHWAY STRUCTURE \*/\*\*

height	2500mm
--------	--------

### 4. REGISTRATION BANKING UNIT

width	1000mm
depth	700mm
height	1000mm

### 5. REGISTRATION COUNTER UNIT

width	1000mm
depth	600mm
height	1000mm

### 6. ACCESSIBLE SHOW READY COUNTER



\* Finishing and capping at Page 101

\*\* Internal passageway of 2500mm and internal height of 2000mm

# INFO POINT OPTIONS

Show Ready - Silver - Reg	40	AMP - Silver - Reg	43
Show Ready - Gold	41	AMP - Gold	44
Show Ready - Platinum	42	AMP - Platinum	45

# 3. Info Point Options

## Show Ready - Silver



### 1. FLOOR COVERING

width	4000mm
depth	4000mm

### 2. SHOW READY LOW WALL

width	1000mm
depth	1000mm
height	1000mm

### 3. REGISTRATION BANKING UNIT x6

width	1000mm
depth	700mm
height	1000mm

### 4. ACCESSIBLE SHOW READY COUNTER



# 3. Info Point Options

## Show Ready - Gold



### 1. FLOOR COVERING

width	5000mm
depth	5000mm

### 2. SHOW READY TOWER

width	1000mm
depth	1000mm
height	3000mm

### 3. SHOW READY LOW WALL

width	1000mm
depth	1000mm
height	1000mm

### 4. REGISTRATION BANKING UNIT x9

width	1000mm
depth	700mm
height	1000mm

### 5. ACCESSIBLE SHOW READY COUNTER



# 3. Info Point Options

## Show Ready - Platinum

### 1. FLOOR COVERING

width	5000mm
depth	5000mm

### 2. SHOW READY ARCHWAY STRUCTURE \*

height	3000mm
--------	--------

### 3. REGISTRATION BANKING UNIT x6

width	1000mm
depth	700mm
height	1000mm

### 4. ACCESSIBLE SHOW READY COUNTER



\* Internal passageway of 3000mm and internal height of 2500mm

# 3. Info Point Options

## AMP - Silver

### 1. FLOOR COVERING

width	4000mm
depth	4000mm

### 2. AMP LOW WALL \*

width	1000mm
depth	1000mm
height	1000mm

### 3. REGISTRATION BANKING UNIT x6

width	1000mm
depth	700mm
height	1000mm

### 4. ACCESSIBLE SHOW READY COUNTER



\* Finishing and capping at Page 101

# 3. Info Point Options

## AMP - Gold

### 1. FLOOR COVERING

width	5000mm
depth	5000mm

### 2. AMP TOWER \*

width	1000mm
depth	1000mm
height	2500mm

### 3. AMP LOW WALL \*

width	1000mm
depth	1000mm
height	1000mm

### 4. REGISTRATION BANKING UNIT x9

width	1000mm
depth	700mm
height	1000mm

### 5. ACCESSIBLE SHOW READY COUNTER



\* Finishing and capping at Page 101

# 3. Info Point Options

## AMP - Platinum

### 1. FLOOR COVERING

width	4000mm
depth	4000mm

### 2. AMP ARCHWAY STRUCTURE \*/\*\*

height	2500mm
--------	--------

### 3. REGISTRATION BANKING UNIT x6

width	1000mm
depth	700mm
height	1000mm

### 4. ACCESSIBLE SHOW READY COUNTER





# THEATRE OPTIONS

Show Ready - Silver	47	AMP - Silver	53
Show Ready - Silver Plus	48	AMP - Silver Plus	54
Show Ready - Gold	49	AMP - Gold	55
Show Ready - Gold Plus	50	AMP - Gold Plus	56
Show Ready - Platinum	51	AMP - Platinum	57
Show Ready - Platinum Plus	52	AMP - Platinum Plus	58

# 4. Theatre Options

## Show Ready - Silver

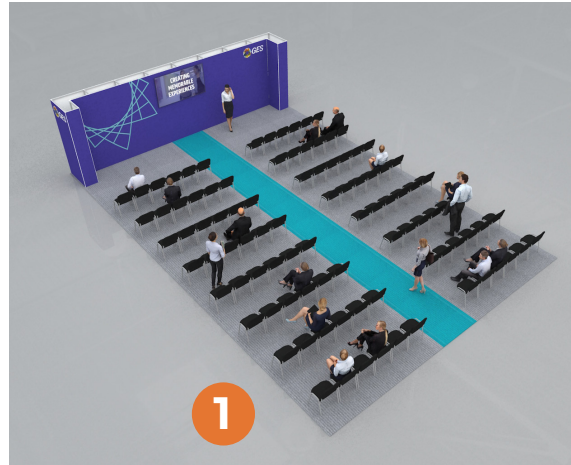
### 1. FLOOR COVERING

width	12000mm
depth	8000mm

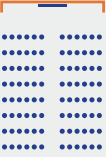
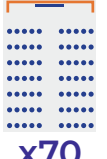


### 2. SHOW READY WALL WITH RETURN AND MOUNTED SCREEN \*

width	8000mm
depth	1000mm
height	2500mm

### 3. SEATING CAPACITY x96



### SEATING CAPACITY PER THEATRE AREA

12mx8m	10mx7m	10mx6m	8mx6m	6mx4m
				
x96	x70	x56	x40	x24

\* Panels to be reinforced for screen support



# 4. Theatre Options

## Show Ready - Silver Plus

### 1. FLOOR COVERING

width	12000mm
depth	8000mm

### 2. SHOW READY WALL WITH RETURN AND MOUNTED SCREEN \*

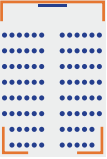
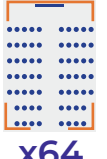
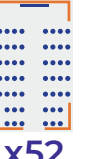


width	8000mm
depth	1500mm
height	2500mm

### 3. SHOW READY LOW WALL x2

### 4. SEATING CAPACITY x96



### SEATING CAPACITY PER THEATRE AREA

12mx8m	10mx7m	10mx6m	8mx6m	6mx4m
				
x92	x64	x52	x36	x24



\* Panels to be reinforced for screen support



# 4. Theatre Options

## Show Ready - Gold

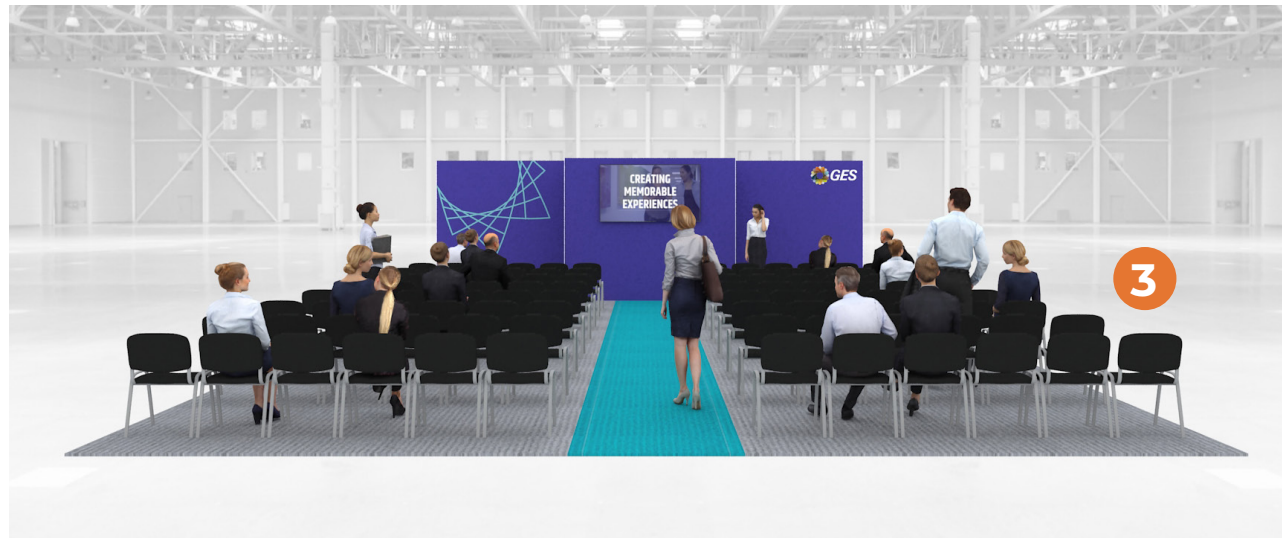
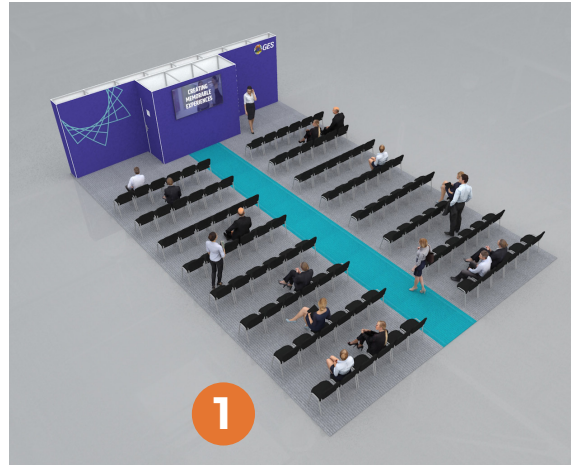
### 1. FLOOR COVERING

width	12000mm
depth	8000mm

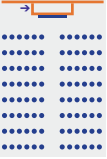
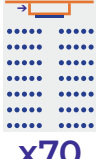


### 2. SHOW READY WALL WITH CENTRAL STORAGE AND MOUNTED SCREEN \*

width	8000mm
depth	1500mm
height	2500mm

### 3. SEATING CAPACITY x96



### SEATING CAPACITY PER THEATRE AREA

12mx8m	10mx7m	10mx6m	8mx6m	6mx4m
				
x96	x70	x56	x40	x24

\* Panels to be reinforced for screen support

# 4. Theatre Options

## Show Ready - Gold Plus

### 1. FLOOR COVERING

width	12000mm
depth	8000mm

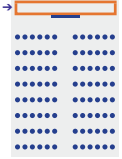
### 2. SHOW READY STORAGE AND MOUNTED SCREEN \*

width	8000mm
depth	1000mm
height	2500mm

### 3. SEATING CAPACITY x96



### SEATING CAPACITY PER THEATRE AREA

12mx8m	10mx7m	10mx6m	8mx6m	6mx4m
				
x96	x70	x56	x40	x24



\* Panels to be reinforced for screen support



# 4. Theatre Options

## Show Ready - Platinum

### 1. FLOOR COVERING

width	12000mm
depth	8000mm

### 2. SHOW READY STORAGE WITH MOUNTED SCREEN\*


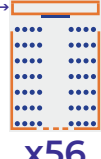
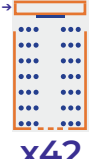

width	8000mm
depth	1000mm
height	3000mm

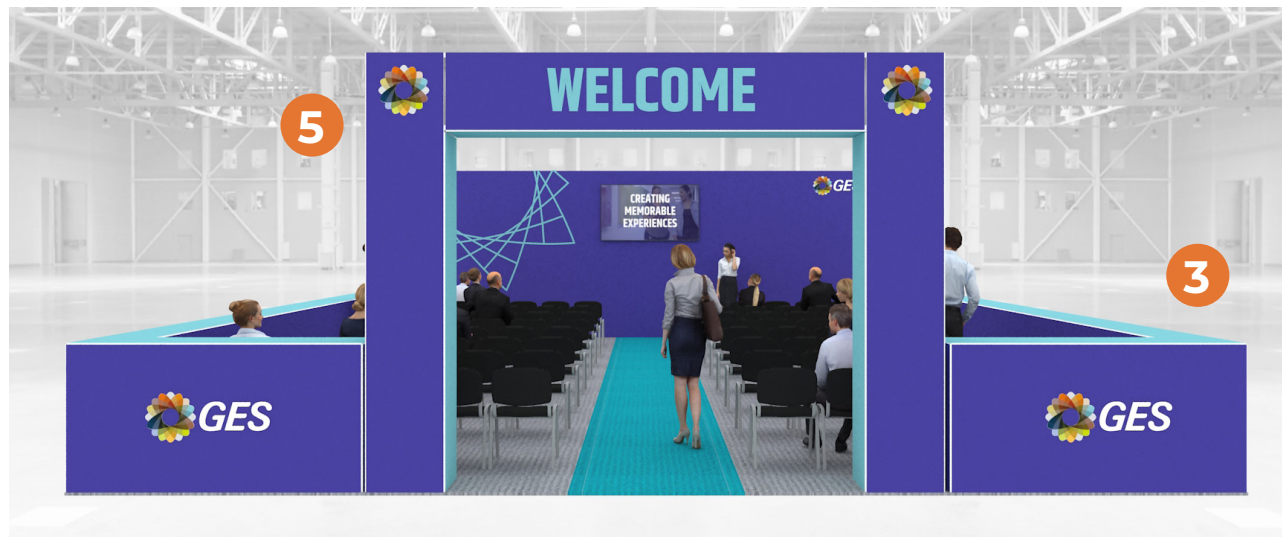
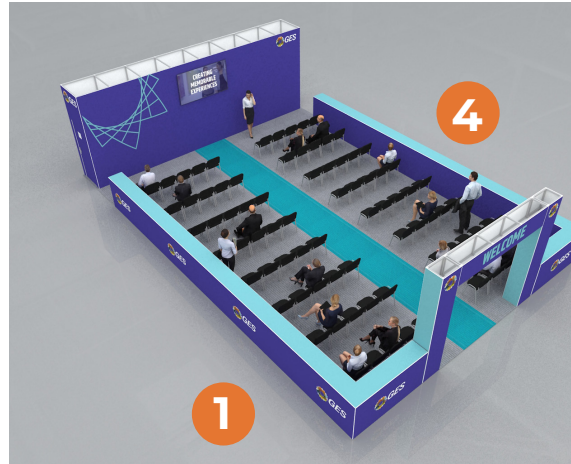
### 3. SHOW READY LOW WALL

### 4. SEATING CAPACITY x80

### 5. ENTRANCE ARCHWAY OF 4000mm \*\*

### SEATING CAPACITY PER THEATRE AREA

12mx8m	10mx7m	10mx6m	8mx6m
			
x80	x56	x42	x30



\* Panels to be reinforced for screen support

\*\* Structure in Show Ready - Internal passageway of 3000mm and internal height of 2500mm

# 4. Theatre Options

## Show Ready - Platinum Plus

### 1. FLOOR COVERING

width	12000mm
depth	8000mm

### 2. SHOW READY STORAGE WITH MOUNTED SCREEN \*


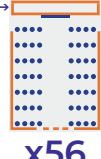
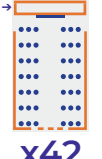

width	8000mm
depth	1000mm
height	3000mm

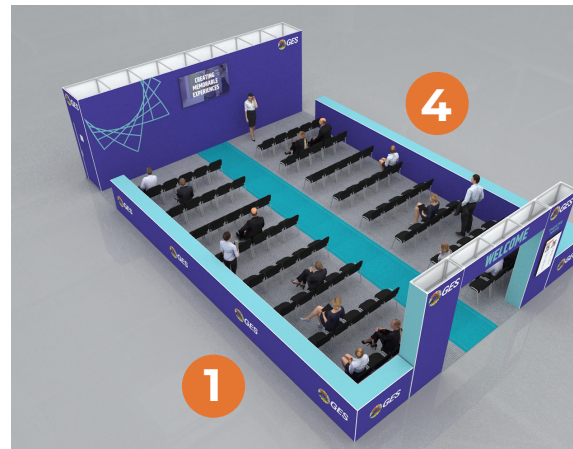
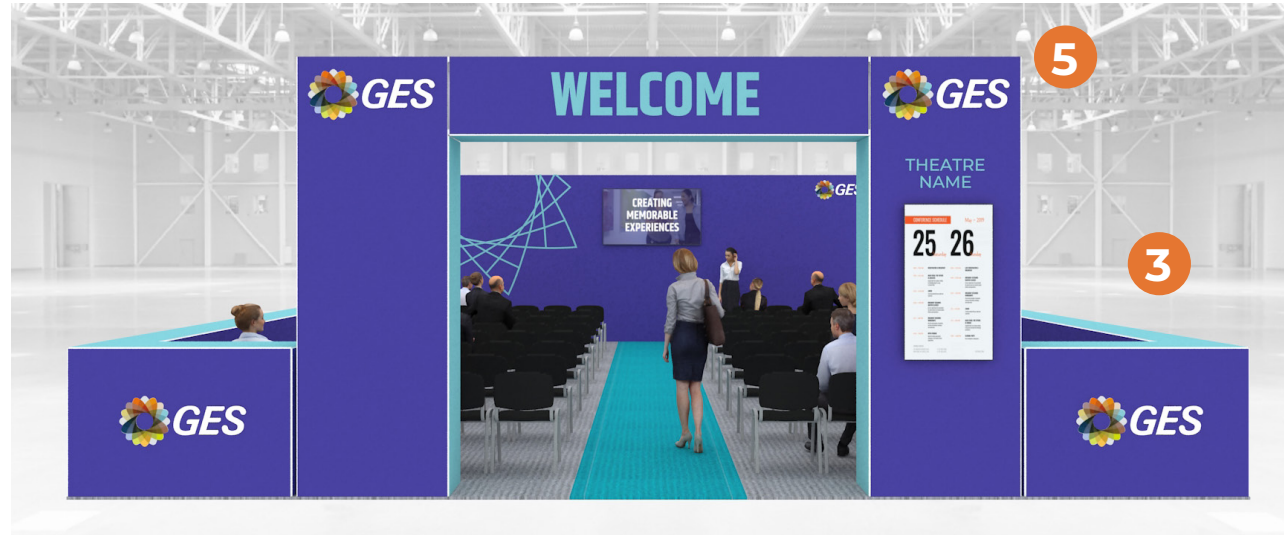
### 3. SHOW READY LOW WALL

### 4. SEATING CAPACITY x80

### 5. ENTRANCE ARCHWAY OF 5000mm WITH MOUNTED SCREEN \*\*/\*\*

### SEATING CAPACITY PER THEATRE AREA

12mx8m	10mx7m	10mx6m	8mx6m
			
x80	x56	x42	x30



\* Panels to be reinforced for screen support

\*\* Structure in Show Ready - Internal passageway of 3000mm and internal height of 2500mm

\*\*\* Screen max width 800mm



# 4. Theatre Options

## AMP - Silver

### 1. FLOOR COVERING

width	12000mm
depth	8000mm

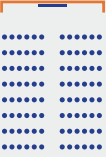
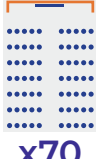


### 2. AMP WALL WITH RETURN AND MOUNTED SCREEN \*\*

width	8000mm
depth	1000mm
height	2500mm

### 3. SEATING CAPACITY x96



### SEATING CAPACITY PER THEATRE AREA

12mx8m	10mx7m	10mx6m	8mx6m	6mx4m
				
x96	x70	x56	x40	x24

\* Finishing and capping solutions at Page 101

\*\* Panels to be reinforced for screen support - Screen not exceeding 20 Kg in Weight



# 4. Theatre Options

## AMP - Silver Plus

### 1. FLOOR COVERING

width	12000mm
depth	8000mm

### 2. AMP WALL WITH RETURN AND MOUNTED SCREEN \*/\*\*


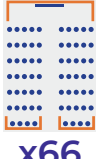
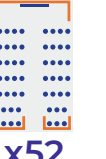


width	8000mm
depth	2000mm
height	2500mm

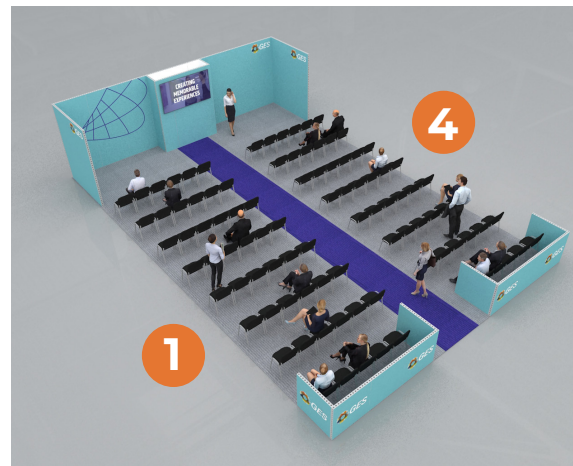
### 3. AMP LOW WALL x2 \*

### 4. SEATING CAPACITY x94



### SEATING CAPACITY PER THEATRE AREA

12mx8m	10mx7m	10mx6m	8mx6m	6mx4m
				
x94	x66	x52	x36	x24



\* Finishing and capping solutions at Page 101

\*\* Panels to be reinforced for screen support - Screen not exceeding 20 Kg in Weight



# 4. Theatre Options

## AMP - Gold

### 1. FLOOR COVERING

width	12000mm
depth	8000mm

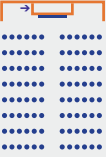
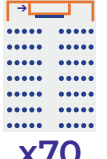



### 2. AMP WALL WITH CENTRAL STORAGE AND MOUNTED SCREEN \*\*/\*\*

width	8000mm
depth	1000mm
height	2500mm

### 3. SEATING CAPACITY x96



### SEATING CAPACITY PER THEATRE AREA

12mx8m	10mx7m	10mx6m	8mx6m	6mx4m
				
x96	x70	x56	x40	x24

\* Finishing and capping solutions at Page 101

\*\* Panels to be reinforced for screen support - Screen not exceeding 20 Kg in Weight



# 4. Theatre Options

## AMP - Gold Plus

### 1. FLOOR COVERING

width	12000mm
depth	8000mm


### 2. AMP WALL WITH CENTRAL STORAGE AND MOUNTED SCREEN \*\*/\*\*

width	8000mm
depth	1000mm
height	2500mm

### 3. SEATING CAPACITY x96



### SEATING CAPACITY PER THEATRE AREA

12mx8m →  x96	10mx7m →  x70	10mx6m →  x56	8mx6m →  x40	6mx4m →  x24
---	---	---	--	--



\* Finishing and capping solutions at Page 101

\*\* Panels to be reinforced for screen support - Screen not exceeding 20 Kg in Weight

# 4. Theatre Options

## AMP - Platinum

### 1. FLOOR COVERING

width	12000mm
depth	8000mm

### 2. AMP STORAGE WITH MOUNTED SCREEN \*\*

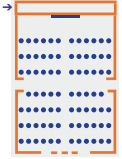
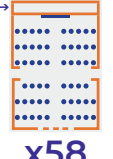
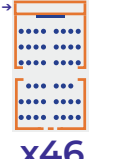

width	8000mm
depth	1000mm
height	3000mm

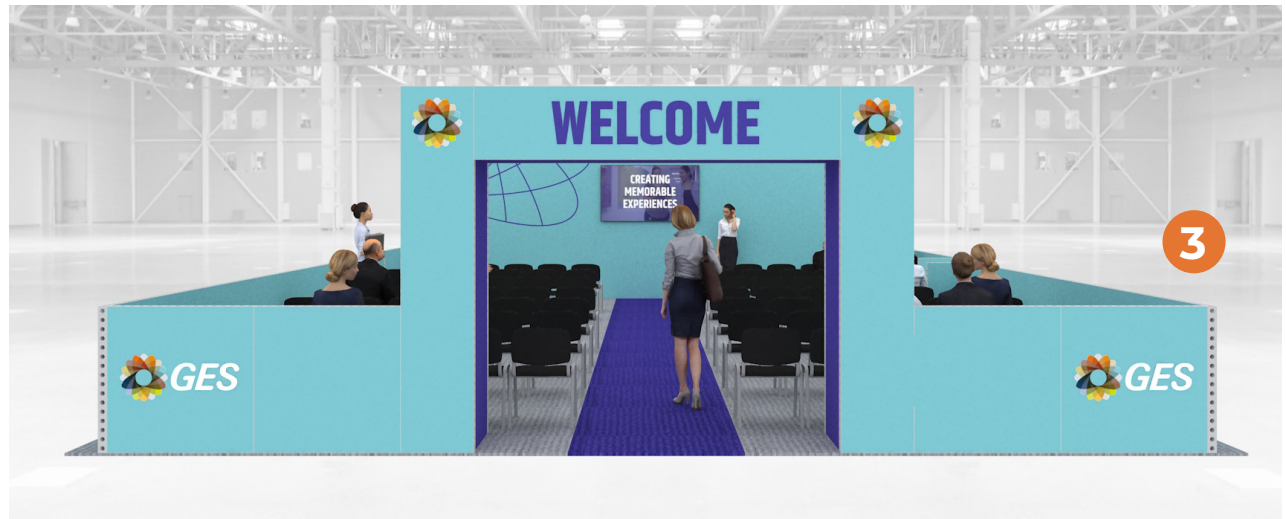
### 3. AMP LOW WALL \*

### 4. SEATING CAPACITY x82

### 5. ENTRANCE ARCHWAY OF 3500mm \*\*/\*\*/\*\*

### SEATING CAPACITY PER THEATRE AREA

12mx8m	10mx7m	10mx6m	8mx6m
			
x82	x58	x46	x32



\* Finishing and capping solutions at Page 101

\*\* Panels to be reinforced for screen support - Screen not exceeding 20 Kg in Weight

\*\* Structure in AMP - Internal passageway of 2500mm and internal height of 2000mm

# 4. Theatre Options

## AMP - Platinum Plus

### 1. FLOOR COVERING

width	12000mm
depth	8000mm

### 2. AMP STORAGE WITH MOUNTED SCREEN \*\*

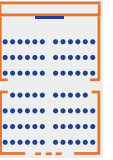
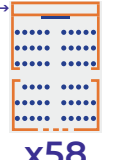
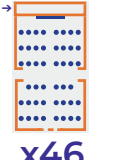

width	8000mm
depth	1000mm
height	3000mm

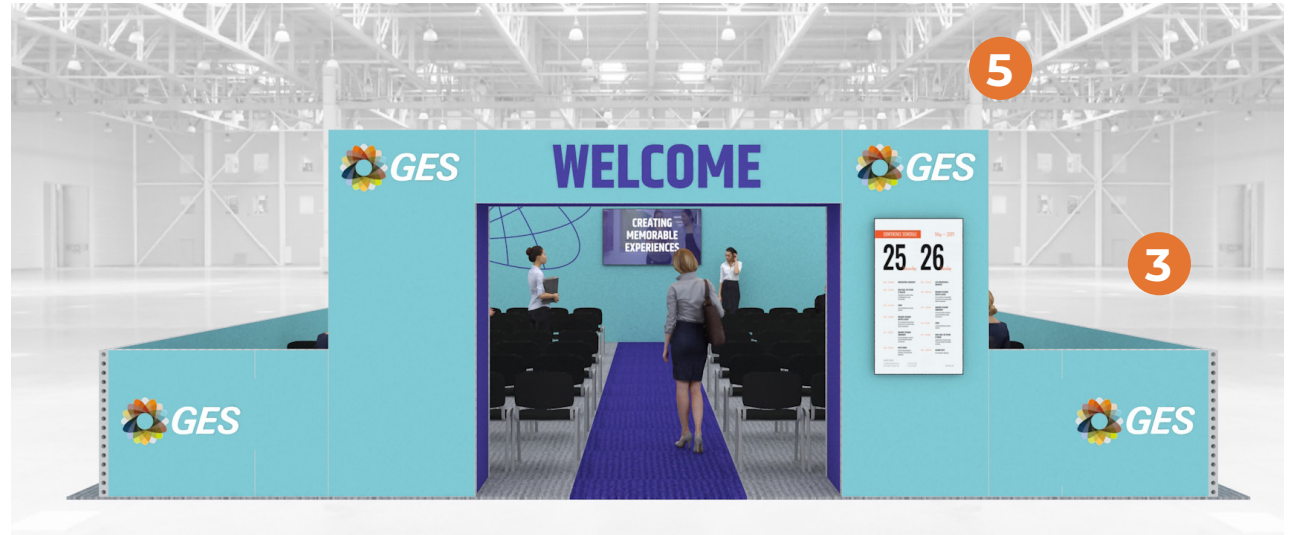
### 3. AMP LOW WALL \*

### 4. SEATING CAPACITY x82

### 5. ENTRANCE ARCHWAY OF 4500mm WITH MOUNTED SCREEN \*\*/\*\*/\*\*

### SEATING CAPACITY PER THEATRE AREA

12mx8m →  x82	10mx7m →  x58	10mx6m →  x46	8mx6m →  x32
---	---	---	--



\* Finishing and capping solutions at Page 101

\*\* Panels to be reinforced for screen support - Screen not exceeding 20 Kg in Weight

\*\*\* Structure in AMP - Internal passageway of 2500mm and internal height of 2000mm



# WORKSHOP OPTIONS

Show Ready - Silver	60	AMP - Silver	63
Show Ready - Gold	61	AMP - Gold	64
Show Ready - Platinum	62	AMP - Platinum	65

# 5. Workshop Options

## Show Ready - Silver

### 1. SHOW READY WALL

height	2500mm
--------	--------

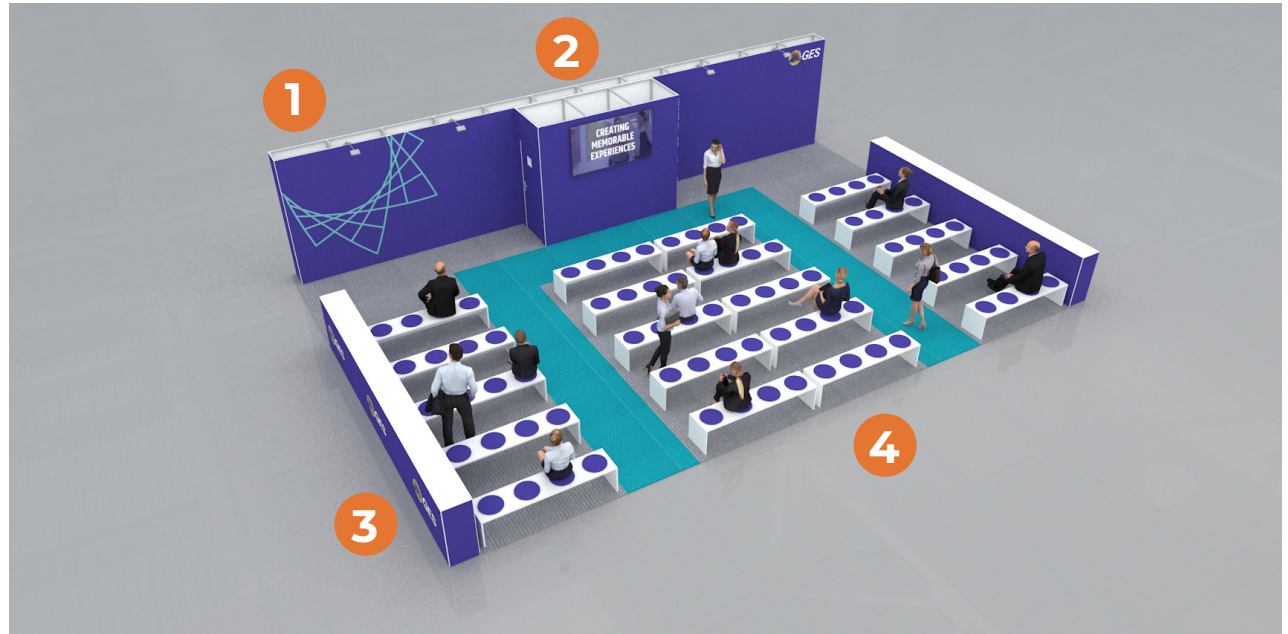
### 2. SHOW READY STORAGE WITH LOCKABLE DOOR AND MOUNTED SCREEN \*

width	3000mm
depth	1000mm
height	2500mm

### 3. SHOW READY LOW SIDE WALL x2

height	1000mm
--------	--------

### 4. BENCH SEATING



\* Panels to be reinforced for screen support

# 5. Workshop Options

## Show Ready - Gold

### 1. SHOW READY WALL

height	2500mm
--------	--------

### 2. SHOW READY STORAGE WITH LOCKABLE DOOR AND MOUNTED SCREEN \*

width	3000mm
depth	1000mm
height	2500mm

### 3. SHOW READY LOW AND HIGH WALL

height	2500mm
--------	--------

### 4. TABLE AND CHAIR SEATING



\* Panels to be reinforced for screen support

# 5. Workshop Options

## Show Ready - Platinum

### 1. SHOW READY WALL

height	3000mm
--------	--------

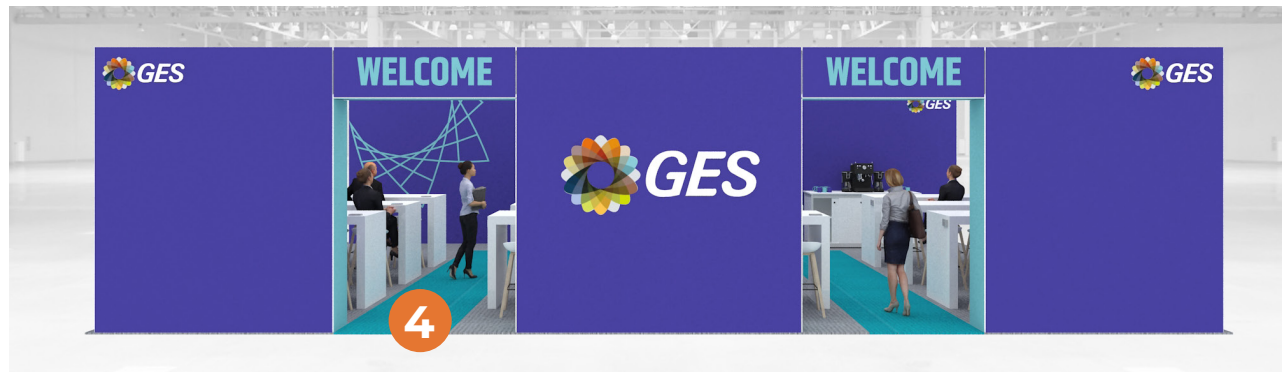
### 2. SHOW READY STORAGE WITH LOCKABLE DOOR AND MOUNTED SCREEN \*

width	3000mm
depth	1000mm
height	2500mm

### 3. SHOW READY HIGH WALLING WITH ARCHWAYS \*\*

height	3000mm
--------	--------

### 4. RACHARGING HIGH TABLE AND STOOL SEATING



\* Panels to be reinforced for screen support

\*\* Internal passageway of 2000mm and internal height of 2500mm

# 5. Workshop Options

## AMP - Silver

### 1. AMP WALL \*

height	2500mm
--------	--------

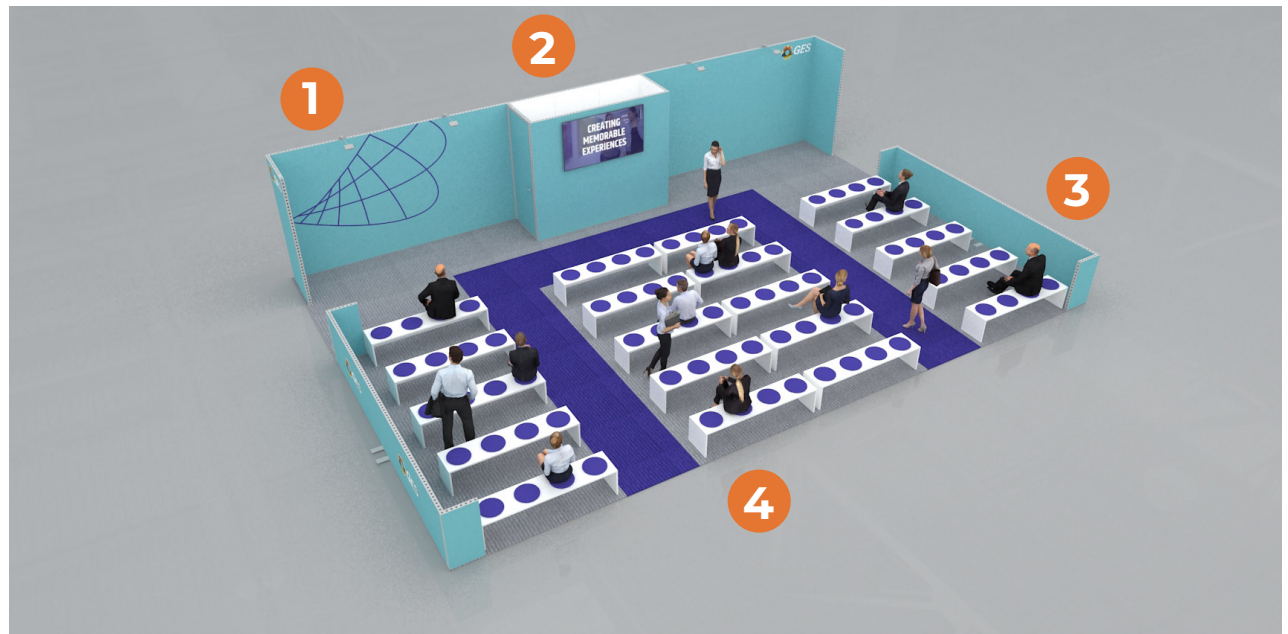
### 2. AMP STORAGE WITH LOCKABLE DOOR AND MOUNTED SCREEN \*\*

width	3000mm
depth	1000mm
height	2500mm

### 3. AMP LOW SIDE WALL x2 \*

height	1000mm
--------	--------

### 4. BENCH SEATING



\* Finishing and capping solutions at Page 18

\*\* Panels to be reinforced for screen support - Screen not exceeding 20 Kg in Weight

# 5. Workshop Options

## AMP - Gold

### 1. AMP WALL \*

height	2500mm
--------	--------

### 2. AMP STORAGE WITH LOCKABLE DOOR AND MOUNTED SCREEN \*\*

width	3000mm
depth	1000mm
height	2500mm

### 3. AMP LOW AND HIGH WALLING \*

height	2500mm
--------	--------

### 4. TABLE AND CHAIR SEATING



\* Finishing and capping solutions at Page 101

\*\* Panels to be reinforced for screen support - Screen not exceeding 20 Kg in Weight

# 5. Workshop Options

## AMP - Platinum

### 1. AMP WALL \*

height	2500mm
--------	--------

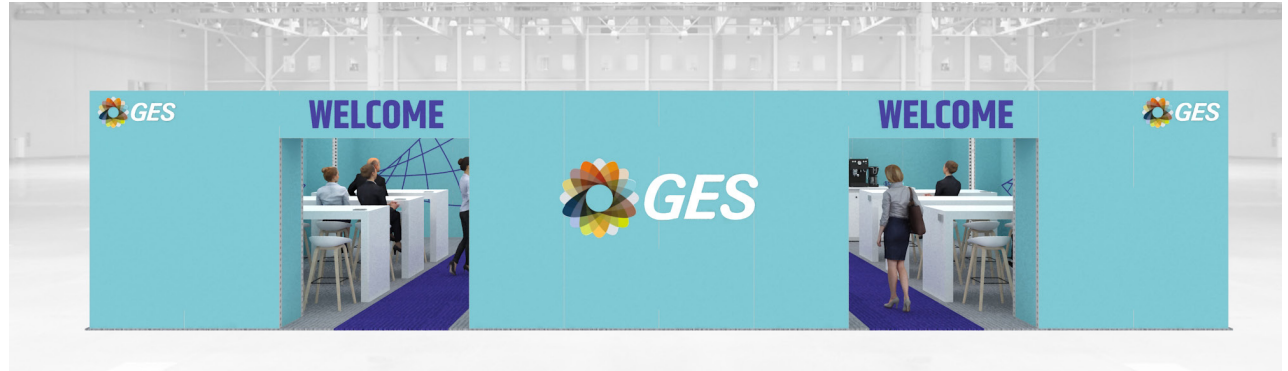
### 2. AMP STORAGE WITH LOCKABLE DOOR AND MOUNTED SCREEN \*/\*\*

width	3000mm
depth	1000mm
height	2500mm

### 3. AMP HIGH WALLING WITH ARCHWAYS \*/\*\*\*

height	2500mm
--------	--------

### 4. RACHARGING HIGH TABLE AND STOOL SEATING



\* Finishing and capping solutions at Page 101

\*\* Panels to be reinforced for screen support - Screen not exceeding 20 Kg in Weight

\*\*\* Internal passageway of 2000mm and internal height of 2000mm

# EXHIBITOR POD OPTIONS

Show Ready - Single Pod	67	AMP - Single Pod	70
Show Ready - Double Pod	68	AMP - Double Pod	71
Show Ready - Quadruple	69	AMP - Quadruple	72

# 6. Exhibitor Pod Options

## Show Ready - Single Pod

### 1. SHOW READY WALL

width	1000mm
depth	500mm
height	2500mm

### 2. WALL MOUNTED SCREEN \*

### 3. LOCKABLE SHELL SCHEME COUNTER WITH OVERLAY GRAPHICS

width	1000mm
depth	500mm
height	1000mm

### 4. ACCESSIBLE AND LOCKABLE SHELL SCHEME COUNTER WITH OVERLAY GRAPHICS



⚠ Raised floor or over head battens may need to be installed at an additional cost if power is required for multiple pods

\* Panels to be reinforced for screen support



# 6. Exhibitor Pod Options

## Show Ready - Double Pod

### 1. SHOW READY WALL

width	1000mm
depth	500mm
height	2500mm

### 2. WALL MOUNTED SCREEN x2 \*

### 3. LOCKABLE SHELL SCHEME COUNTER WITH OVERLAY GRAPHICS x2

width	1000mm
depth	500mm
height	1000mm

### 4. ACCESSIBLE AND LOCKABLE SHELL SCHEME COUNTER WITH OVERLAY GRAPHICS



⚠ Raised floor or over head battens may need to be installed at an additional cost if power is required for multiple pods



\* Panels to be reinforced for screen support

# 6. Exhibitor Pod Options

## Show Ready - Quadruple Pod

### 1. SHOW READY CORNER WALL x2

width	2000mm
depth	200mm
height	2500mm

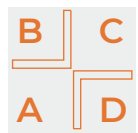
### 2. WALL MOUNTED SCREEN x4 \*

### 3. OPTIONAL SOLUTIONS INCLUDING:

- ACCESSIBLE AND LOCKABLE SHELL SCHEME COUNTER WITH OVERLAY GRAPHICS
- RECHARGING HIGH TABLE AND STOOLS SET
- HIGH TABLE AND STOOLS SET



### EXHIBITOR POD AREAS



4mx4m

A - 2m x 2m	4sqm
B - 1.6m x 1.6m	2.56sqm
C - 2m x 2m	4sqm
D - 1.6m x 1.6m	2.56sqm



 Raised floor or over head battens may need to be installed at an additional cost if power is required for multiple pods

\* Panels to be reinforced for screen support



# 6. Exhibitor Pod Options

## AMP - Single Pod

### 1. AMP WALL \*

width	1000mm
depth	500mm
height	2500mm

### 2. WALL MOUNTED SCREEN \*\*

### 3. LOCKABLE SHELL SCHEME COUNTER WITH OVERLAY GRAPHICS

width	1000mm
depth	500mm
height	1000mm

### 4. ACCESSIBLE AND LOCKABLE SHELL SCHEME COUNTER WITH OVERLAY GRAPHICS



⚠ Raised floor or over head battens may need to be installed at an additional cost if power is required for multiple pods



\* Finishing and capping solutions at Page 101

\*\* Panels to be reinforced for screen support - Screen not exceeding 20 Kg in Weight

# 6. Exhibitor Pod Options

## AMP - Double Pod

### 1. AMP WALL \*

width	1000mm
depth	500mm
height	2500mm


### 2. WALL MOUNTED SCREEN x2 \*\*

### 3. LOCKABLE SHELL SCHEME COUNTER WITH OVERLAY GRAPHICS x2

width	1000mm
depth	500mm
height	1000mm

### 4. ACCESSIBLE AND LOCKABLE SHELL SCHEME COUNTER WITH OVERLAY GRAPHICS



 Raised floor or over head battens may need to be installed at an additional cost if power is required for multiple pods



\* Finishing and capping solutions at Page 101

\*\* Panels to be reinforced for screen support - Screen not exceeding 20 Kg in Weight

# 6. Exhibitor Pod Options

## AMP - Quadruple Pod

### 1. AMP X SHAPED STRUCTURE \*

width	2000mm
depth	200mm
height	2500mm

### 2. WALL MOUNTED SCREEN x4 \*\*

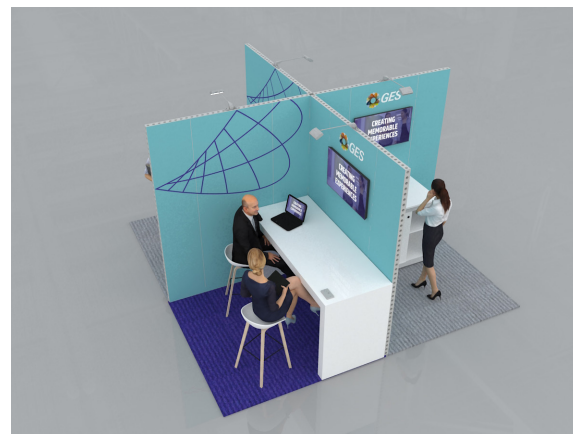
### 3. OPTIONAL SOLUTIONS INCLUDING:


- ACCESSIBLE AND LOCKABLE SHELL SCHEME COUNTER WITH OVERLAY GRAPHICS
- RECHARGING HIGH TABLE AND STOOLS SET
- HIGH TABLE AND STOOLS SET



### EXHIBITOR POD AREAS

B	C	A - 2m x 2m	4sqm
A	D	B - 2m x 2m	4sqm
		C - 2m x 2m	4sqm
		D - 2m x 2m	4sqm
4mx4m			



 Raised floor or over head battens may need to be installed at an additional cost if power is required for multiple pods

\* Finishing and capping solutions at Page 101

\*\* Panels to be reinforced for screen support - Screen not exceeding 20 Kg in Weight



# SALES LOUNGE OPTIONS

Show Ready - Silver	74	AMP - Silver	77
Show Ready - Gold	75	AMP - Gold	78
Show Ready - Platinum	76	AMP - Platinum	79

# 7. Sales Lounge Options

## Show Ready - Silver



1. SHOW READY WALL WITH STORAGE AND LOCKABLE DOOR
2. LOUNGE CORNER WITH SHOW READY LOW WALL
3. RECEPTION AREA WITH SHOW READY LOW WALL
4. CATERING AREA
5. RECHARGING MEETING AREA WITH SCREEN \*
6. HIGH SEATING



\* Panels to be reinforced for screen support



# 7. Sales Lounge Options

## Show Ready - Gold



1. SHOW READY WALL WITH STORAGE AND LOCKABLE DOOR
2. SEMI-PRIVATE MEETING AREA OR LOUNGE AREA
3. RECHARGING MEETING AREA WITH SHOW READY HIGH WALL AND SCREEN \*
4. RECEPTION AREA WITH SHOW READY HIGH WALL AND SCREEN \*
5. SHELL SCHEME LOCKABLE COUNTER
6. HIGH SEATING



\* Panels to be reinforced for screen support



# 7. Sales Lounge Options

## Show Ready - Platinum



1. SHOW READY MEETING ROOM WITH LOCKABLE DOOR
2. SHOW READY STORAGE ROOM WITH LOCKABLE DOOR
3. BAR AREA WITH SHOW READY COUNTER
4. RECEPTION AREA WITH BACKLIT SHOW READY WALL
5. BACKLIT SHOW READY WALL
6. LOUNGE CORNER WITH SHOW READY HIGH AND LOW WALL
7. HIGH SEATING

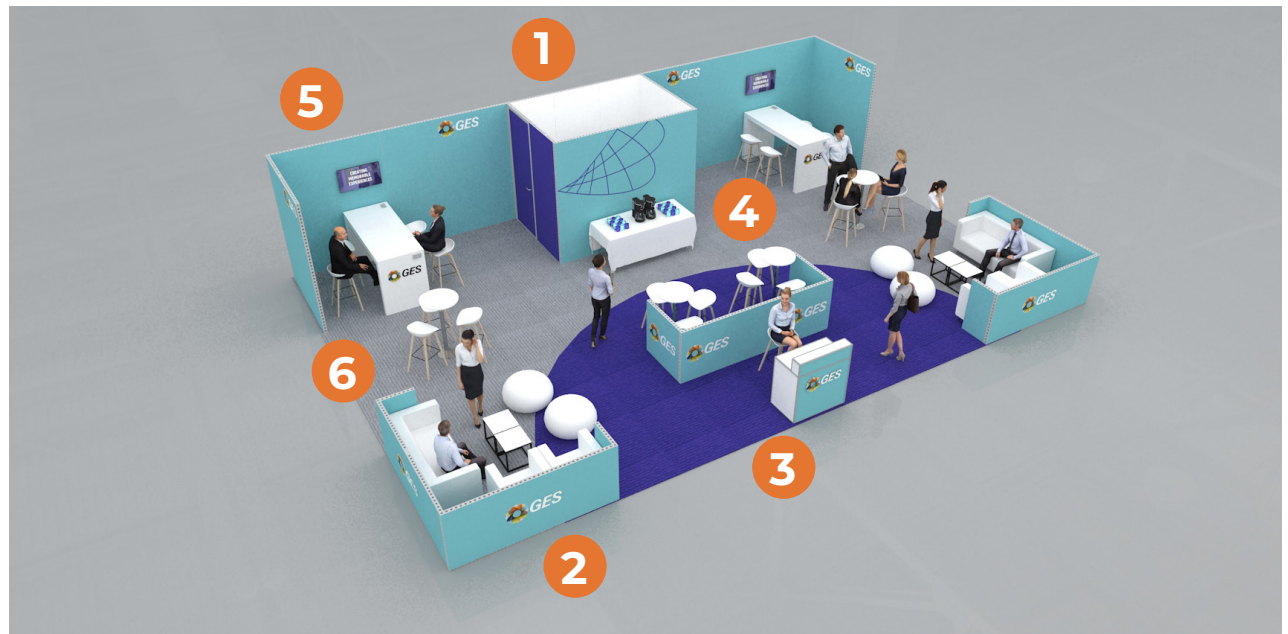


# 7. Sales Lounge Options

## AMP - Silver



1. AMP WALL WITH STORAGE AND LOCKABLE DOOR \*
2. LOUNGE CORNER WITH AMP LOW WALLS \*
3. RECEPTION AREA WITH AMP LOW WALL \*
4. CATERING AREA
5. RECHARGING MEETING AREA WITH SCREEN \*\*
6. HIGH SEATING



\* Finishing and capping options at Page 101

\*\* Panels to be reinforced for screen support - Screen not exceeding 20 Kg in Weight

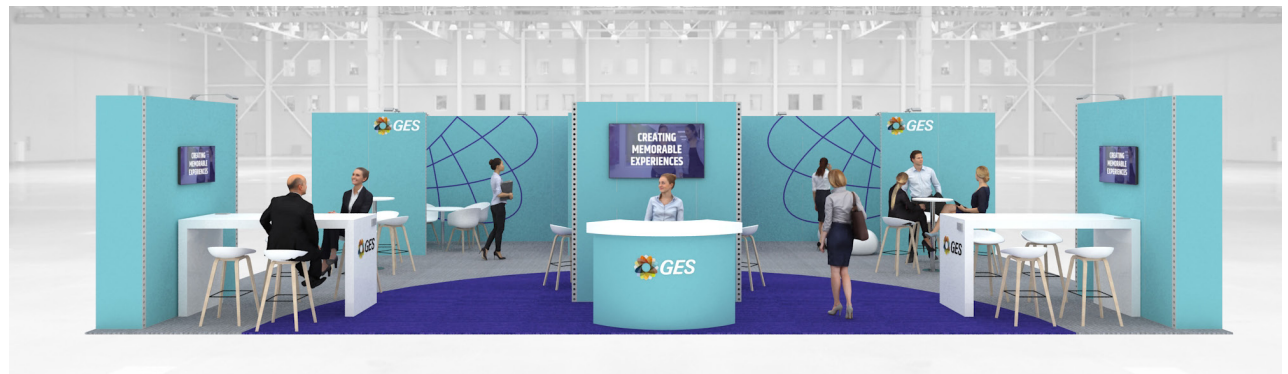


# 7. Sales Lounge Options

## AMP - Gold



1. AMP WALL WITH STORAGE AND LOCKABLE DOOR \*
2. SEMI-PRIVATE MEETING AREA OR LOUNGE AREA
3. RECHARGING MEETING AREA WITH AMP HIGH WALL AND SCREEN \*\*
4. RECEPTION AREA WITH AMP WALL AND SCREEN \*\*
5. SHELL SCHEME LOCKABLE COUNTER
6. HIGH SEATING



\* Finishing and capping options at Page 101

\*\* Panels to be reinforced for screen support - Screen not exceeding 20 Kg in Weight



# 7. Sales Lounge Options

## AMP - Platinum



1. AMP MEETING ROOM WITH LOCKABLE DOOR \*
2. AMP STORAGE ROOM WITH LOCKABLE DOOR \*
3. BAR AREA WITH AMP COUNTER \*
4. RECEPTION AREA WITH BACKLIT SHOW READY WALL
5. BACKLIT SHOW READY WALL
6. LOUNGE CORNER WITH AMP LOW WALL
7. RECHARGING TABLES



\* Finishing and capping options at Page 101



# MEETING ROOM OPTIONS

AMP - Silver  
AMP - Gold  
AMP - Platinum

81  
82  
83

Show Ready - Silver  
Show Ready - Gold  
Show Ready - Platinum

84  
85  
86

# 8. Meeting Room Options

## AMP - Silver

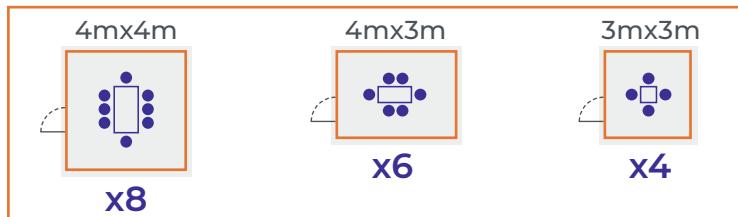
### 1. AMP MEETING ROOM WITH LOCKABLE DOOR \*

width	4000mm
depth	4000mm
height	2500mm

### 2. GRAPHICS OPTIONS (UP TO 8)



### SEATING CAPACITY PER MEETING ROOM AREA



\* Finishing and capping options at Page 101



# 8. Meeting Room Options

## AMP - Gold

### 1. AMP MEETING ROOM WITH LOCKABLE DOOR \*

width	4000mm
depth	4000mm
height	2500mm

### 2. GRAPHICS OPTIONS (UP TO 6)

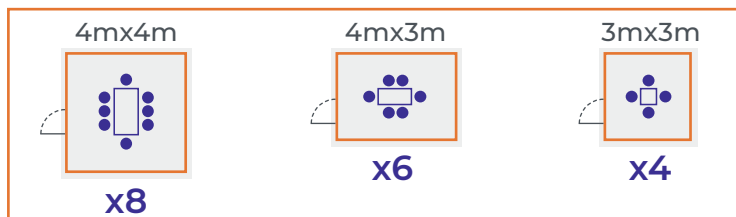
### 3. AMP WALL WITH PERSPEX PANELS

### 4. FREESTANDING SCREEN \*\*

### 5. LONG ARM SPOTLIGHTS



### SEATING CAPACITY PER MEETING ROOM AREA



\* Finishing and capping options at Page 101  
 \*\* Freestanding option dependant on power access

# 8. Meeting Room Options

## AMP - Platinum

### 1. AMP MEETING ROOM WITH LOCKABLE DOOR \*

width	4000mm
depth	4000mm
height	2500mm

### 2. GRAPHICS OPTIONS (UP TO 6)

### 3. MUSLIN CEILING

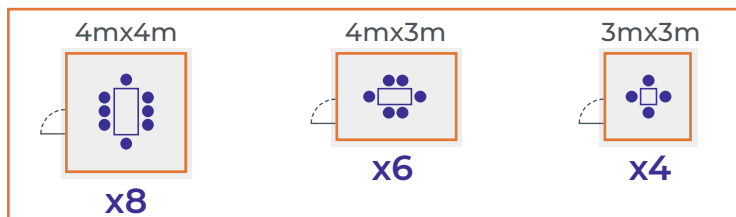
### 4. AMP WALL WITH PERSPEX PANELS AND VINYL GRAPHICS

### 5. WALL MOUNTED SCREEN \*\*

### 6. LONG ARM SPOTLIGHTS

### 7. WALL MOUNTED TOUCH SCREEN \*\*

### SEATING CAPACITY PER MEETING ROOM AREA



\* Finishing and capping options at Page 101

\*\* Panels to be reinforced for screen support - Screen not exceeding 20 Kg in Weight

# 8. Meeting Room Options

## Show Ready - Silver

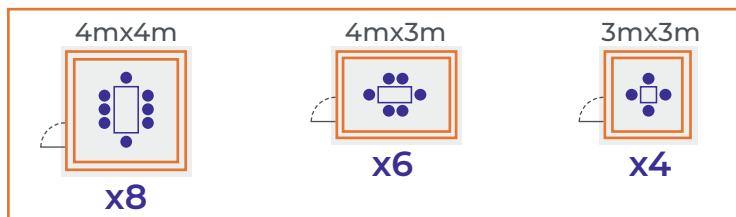
### 1. SHOW READY MEETING ROOM WITH LOCKABLE DOOR

width	4000mm
depth	4000mm
height	2500mm

### 2. GRAPHICS OPTIONS (UP TO 8)



### SEATING CAPACITY PER MEETING ROOM AREA



# 8. Meeting Room Options

## Show Ready - Gold

### 1. SHOW READY MEETING ROOM WITH LOCKABLE DOOR

width	4000mm
depth	4000mm
height	2500mm

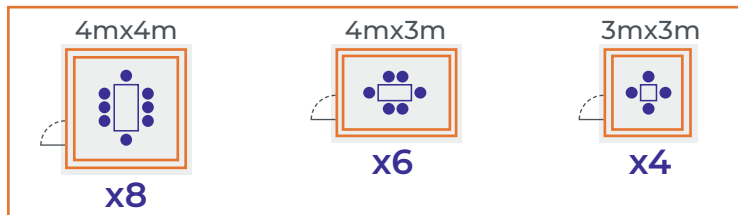
### 2. GRAPHICS OPTIONS (UP TO 8)

### 3. FREESTANDING SCREEN \*

### 4. LONG ARM SPOTLIGHTS



### SEATING CAPACITY PER MEETING ROOM AREA



\* Freestanding option dependant on power access



# 8. Meeting Room Options

## Show Ready - Platinum

### 1. SHOW READY MEETING ROOM WITH LOCKABLE DOOR

width	4000mm
depth	4000mm
height	2500mm

### 2. GRAPHICS OPTIONS (UP TO 8)

### 3. MUSLIN CEILING

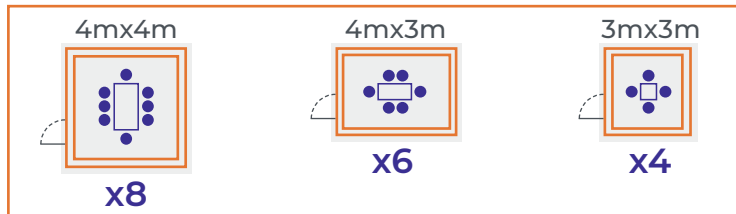
### 4. WALL MOUNTED SCREEN \*

### 5. LONG ARM SPOTLIGHTS

### 6. WALL MOUNTED TOUCH SCREEN \*



### SEATING CAPACITY PER MEETING ROOM AREA



\* Panels to be reinforced for screen support



# LOUNGE AND BAR OPTIONS

3-Side Open - Show Ready - Silver 88  
3-Side Open - Show Ready - Gold 89  
3-Side Open - Show Ready - Platinum 90

3-Side Open - AMP - Silver 91  
3-Side Open - AMP - Gold 92  
3-Side Open - AMP - Platinum 93

4-Side Open - Show Ready - Silver 94  
4-Side Open - Show Ready - Gold 95  
4-Side Open - Show Ready - Platinum 96

4-Side Open - AMP - Silver 97  
4-Side Open - AMP - Gold 98  
4-Side Open - AMP - Platinum 99

# 9. Lounge and Bar Options

## 3-Sides Open - Show Ready - Silver



### 1. SHOW READY WALL

height	2500mm
--------	--------

### 2. SHOW READY BAR COUNTER

### 3. HIGH AND LOW SEATING



# 9. Lounge and Bar Options

## 3-Sides Open - Show Ready - Gold



### 1. SHOW READY WALL WITH STORAGE AND LOCKABLE DOOR

height	2500mm
--------	--------

### 2. SHOW READY BAR COUNTER

### 3. LOUNGE CORNER WITH SHOW READY LOW WALL

### 4. HIGH AND LOW SEATING



# 9. Lounge and Bar Options

## 3-Sides Open - Show Ready - Platinum



### 1. SHOW READY WALL WITH STORAGE AND LOCKABLE DOOR

height	2500mm
--------	--------

### 2. SHOW READY BAR COUNTER

### 3. VIP AREA WITH SHOW READY LOW WALL

### 4. HIGH AND LOW SEATING



# 9. Lounge and Bar Options

## 3-Sides Open - AMP - Silver



### 1. AMP WALL \*

height	2500mm
--------	--------

### 2. AMP BAR COUNTER \*

### 3. HIGH AND LOW SEATING



\* Finishing and capping options at Page 101



# 9. Lounge and Bar Options

## 3-Sides Open - AMP - Gold



1. AMP BACK WITH STORAGE AND LOCKABLE DOOR \*

height	2500mm
--------	--------

2. AMP BAR COUNTER \*

3. LOUNGE CORNER WITH AMP LOW WALL \*

4. HIGH AND LOW SEATING



\* Finishing and capping options at Page 101



# 9. Lounge and Bar Options

## 3-Sides Open - AMP - Gold



HOME



LOUNGE  
AND BAR



EXTRA'S

### 1. AMP WALL WITH STORAGE AND LOCKABLE DOOR \*

height	2500mm
--------	--------

### 2. AMP BAR COUNTER \*

### 3. VIP AREA WITH AMP LOW WALL \*

### 4. HIGH AND LOW SEATING



\* Finishing and capping options at Page 101



# 9. Lounge and Bar Options

## 4-Sides Open - Show Ready - Silver



### 1. SHOW READY TOWER

width	1000mm
depth	1000mm
height	3000mm

### 2. SHOW READY BAR COUNTER

### 3. HIGH AND LOW SEATING



# 9. Lounge and Bar Options

## 4-Sides Open - Show Ready - Gold



### 1. SHOW READY STORAGE ROOM WITH LOCKABLE DOOR

width	3000mm
depth	2000mm
height	2500mm

### 2. SHOW READY BAR COUNTER

### 3. SHELL SCHEME LOCKABLE COUNTER

### 4. LOUNGE CORNER WITH SHOW READY LOW WALL

### 5. HIGH AND LOW SEATING



# 9. Lounge and Bar Options

## 4-Sides Open - Show Ready - Platinum



### 1. SHOW READY TRIPLE ARCHWAY STRUCTURE \*

width	11000mm
depth	1000mm
height	3000mm

### 2. SHOW READY BAR COUNTER

### 3. LOUNGE CORNER WITH SHOW READY LOW WALL

### 4. HIGH AND LOW SEATING



\* Side internal passageways of 2000mm, central passage way of 2500mm and internal height of 2500mm



# 9. Lounge and Bar Options

## 4-Sides Open - AMP - Silver

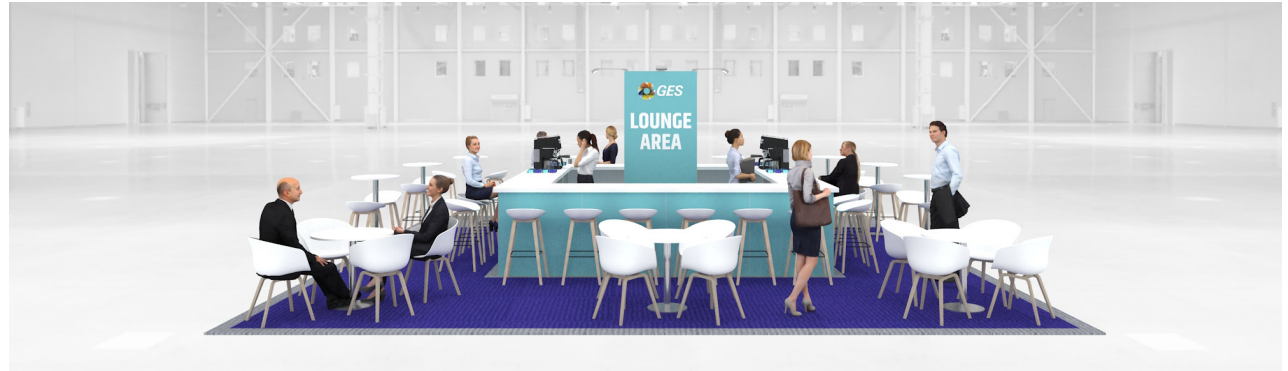


### 1. AMP TOWER \*

width	1000mm
depth	1000mm
height	2500mm

### 2. AMP BAR COUNTER \*

### 3. HIGH AND LOW SEATING



\* Finishing and capping options at Page 101



# 9. Lounge and Bar Options

## 4-Sides Open - AMP - Gold



HOME



LOUNGE  
AND BAR



EXTRA'S

### 1. AMP STORAGE ROOM WITH LOCKABLE DOOR \*

width	3000mm
depth	2000mm
height	2500mm

### 2. AMP BAR COUNTER \*

### 3. SHELL SCHEME LOCKABLE COUNTER

### 4. LOUNGE CORNER WITH AMP LOW WALL \*

### 5. HIGH AND LOW SEATING



\* Finishing and capping options at Page 101



# 9. Lounge and Bar Options

## 4-Sides Open - AMP - Platinum



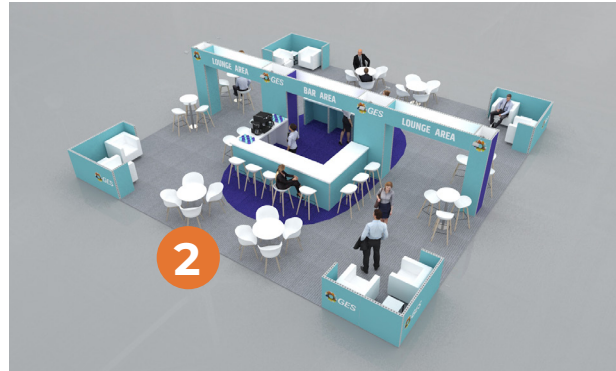
### 1. SHOW READY TRIPLE ARCHWAY STRUCTURE \*/\*\*

width	10500mm
depth	500mm
height	2500mm

### 2. AMP BAR COUNTER \*

### 3. LOUNGE CORNER WITH AMP LOW WALL \*

### 4. HIGH AND LOW SEATING



\* Finishing and capping options at Page 101

\* Internal passageways of 2500mm and internal height of 2000mm



# 10



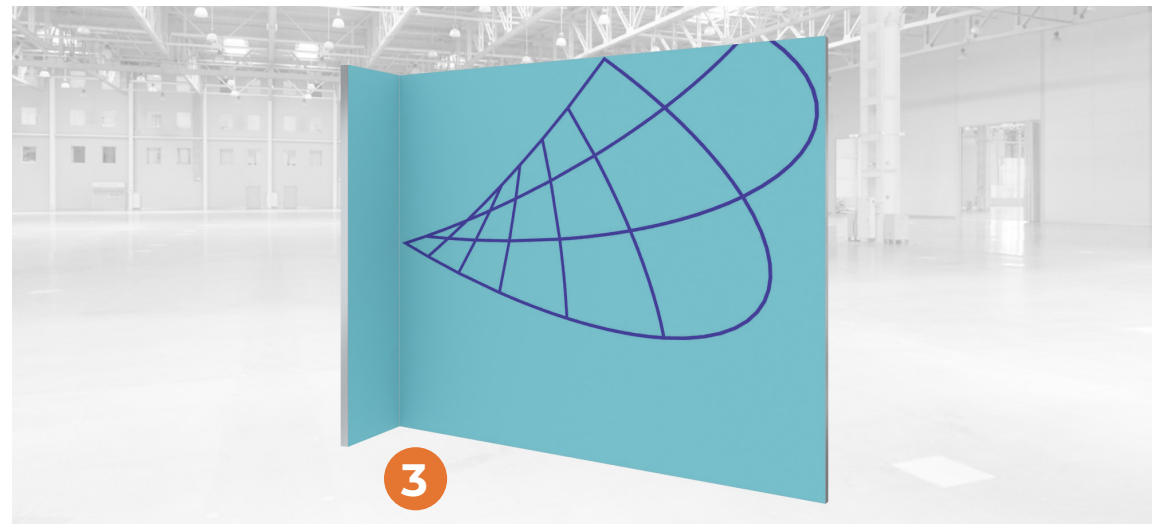
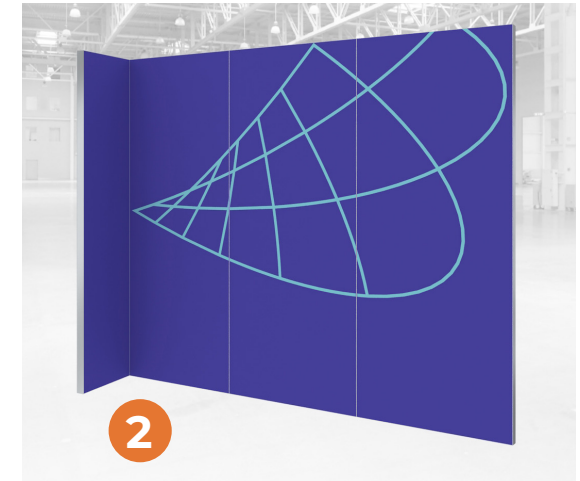
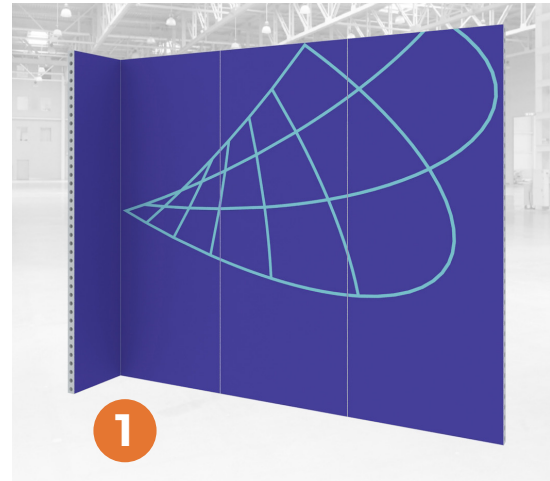
## EXTRA'S

Finishing Options - AMP	101
NEC - Entrance Cladding Options	102
Theatre - Show Ready - Optional Add-on	103
Theatre - AMP - Optional Add-on	104
Branding - Logo Options	105

# 10. Extra's

## Finishing - AMP

1. INLAY GRAPHIC AND VISIBLE EDGE STRUCTURE
2. INLAY GRAPHIC AND CAPPING ON EDGE STRUCTURE \*
3. SEAMLESS FABRIC GRAPHIC AND CAPPING ON EDGE STRUCTURE \*



\* Capping finishing in foamex - Standard colors: white and black  
Possible variations in other colors

# 10. Extra's

## NEC - Entrance Cladding Option

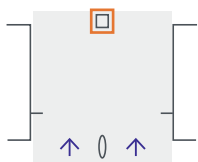


### 1. SHOW READY CLADDING STRUCTURE \*

width	2000mm
depth	2000mm
height	2500mm



### KEY PLAN



\* Applicable to any kinds of pack - Structure available only in Show Ready



# 10. Extra's

## Theatre - Show Ready - Optional Add-on

1. SUSPENDED BANNER \*
2. STAGE WITH FURNITURE
3. SHOW READY TOWER WITH WALL MOUNTED SCREEN \*\*
4. SHOW READY ARCHWAY OF 5000mm WITH WALL MOUNTED SCREEN \*\*/\*\*



\* According to venue regulation

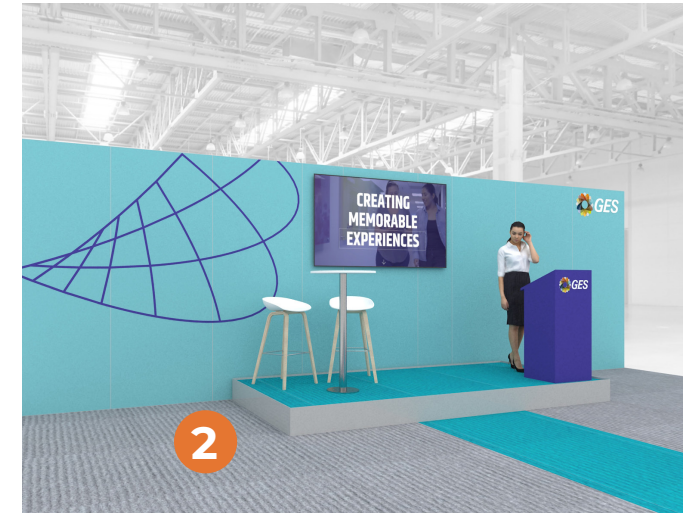
\*\* Panels to be reinforced - Screen max width 800mm

\*\*\* Structure in Show Ready - Internal passageway of 3000mm and internal height of 2500mm

# 10. Extra's

## Theatre - AMP - Optional Add-on

1. SUSPENDED BANNER \*
2. STAGE WITH FURNITURE
3. AMP TOWER WITH WALL MOUNTED SCREEN \*\*/\*\*\*
4. AMP ARCHWAY OF 4500mm WITH WALL MOUNTED SCREEN \*\*\*/\*\*\*\*



\* According to venue regulation - \*\* Finishing and capping options at Page 101

\*\*\* Panels to be reinforced - Screen max width 800mm and not exceeding 20Kg in weight

\*\*\*\* Structure in Show Ready - Internal passageway of 2500mm and internal height of 2000mm

# 10. Extra's

## Branding - Logo Options

1. PRINTED GRAPHICS \*
2. MAGNETIC FOAMEX (MOVABLE) \*
3. WALL MOUNTED FOAMEX WITH STAND-OFFS \*
4. WALL MOUNTED FOAMEX WITH STAND-OFFS AND BACKLIT LED STRIPES \*



\* Options available on both Show Ready and AMP walls

CONTENTS

11



# REALISED PROJECTS



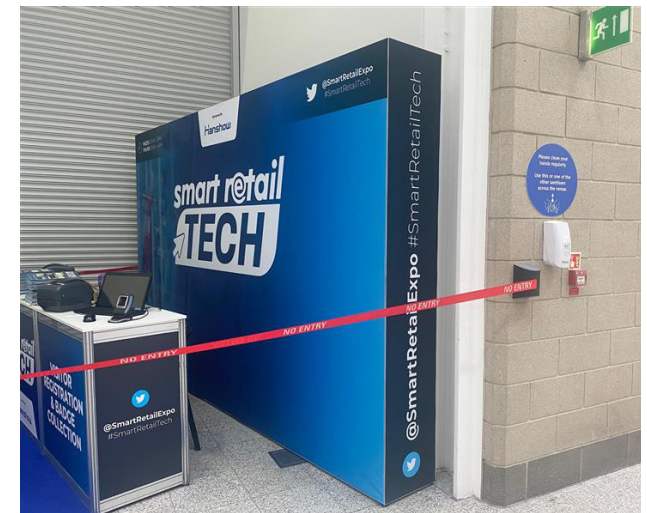
# 11. Realised Projects



## EXAMPLES OF THEATRE OPTIONS



## EXAMPLES OF ENTRANCE OPTIONS





# THANK YOU

Have Questions?  
Please speak with our features team or account manager